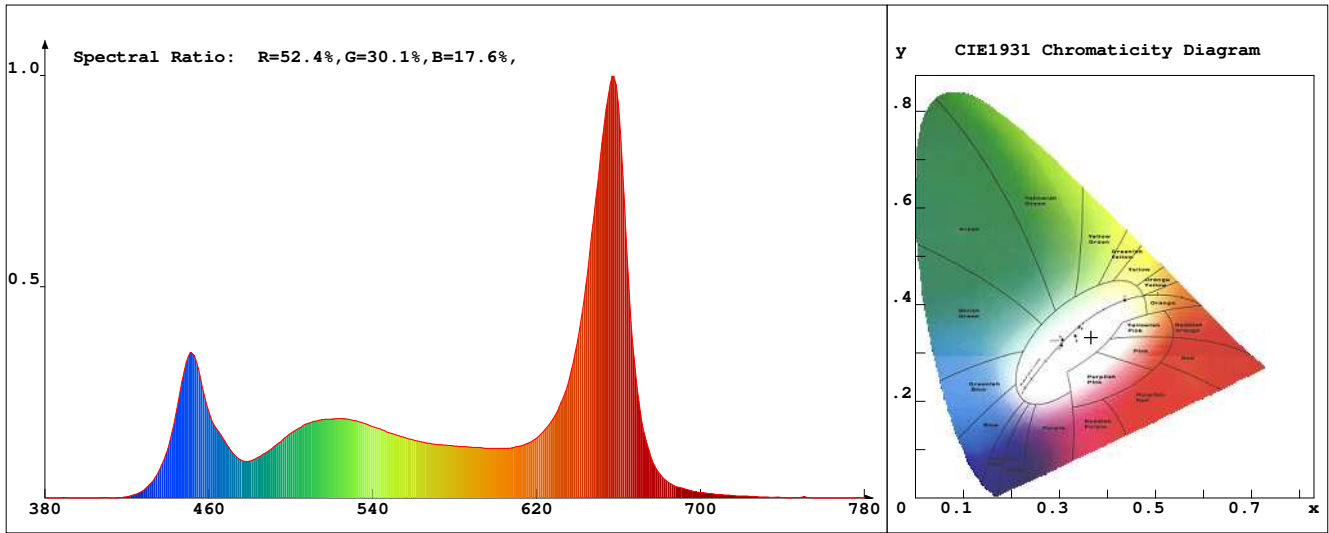


LED Test Report

Product Mark

Product Type : CBWW01-38UV310-1_v1 _ White Manufacturer : -
 Temperature : 'C Humidity : -%
 Operator : - Test Date : 2026-03-03
 Remark :



Chroma Parameters

Chro.Coor.:x=0.3657 y=0.3324 u=0.2337 v=0.3187 duv=-0.0178
 CCT: 4104K Dominant Wave.:613.5nm Purity:9.4% Centre Wave:653.6nm
 Flux RGB Ratio:R=24.2%,G=72.2%,B=3.6% Peak Wave:656.8nm Half Width:21.2nm

Rendering Index:Ra= 56.9 CRI= 66.9

R1 =51	R2 =78	R3 =80	R4 =50	R5 =54	R6 =80	R7 =62	R8 =-0
R9 =-126	R10=52	R11=40	R12=66	R13=57	R14=87	R15=29	
PPF: 32.699umol/s (400-700nm)			PRF: 6.7mW (400-700nm)			PAR: 5.8mW (400-700nm)	

Photo Parameters

Flux:1580.49lm Effi.:69.7lm/W Radiant:6747.6mW Iv:0.0mcd
 Scotopic Flux:3423.1Plm Effi.:0.0Plm/W S/P:2.2
 Efficiency:0.00 Effi Level:A++ (EU 874-2012) Photon Flux:32885.500umol/s (380-780nm)

Ele. Parameters

Forward Current:If=472.0mA Reverse Voltage:Vr=5.00V
 Forward Voltage:Vf=48.05V Reverse Current:Ir=0.00uA
 Power:P=22.690W

Instrument state

Instrument:Lisun Integral Time: 31.364ms VPeak: 14760
 VDark: 1414 Scan Range: 380-780nm Product ID: 201508924

IES TM-30-2015 Test Report

Product Mark

Product Type : CBWW01-38UV310-1_v1 _ White Manufacturer : -

Temperature : 'C

Humidity : -%

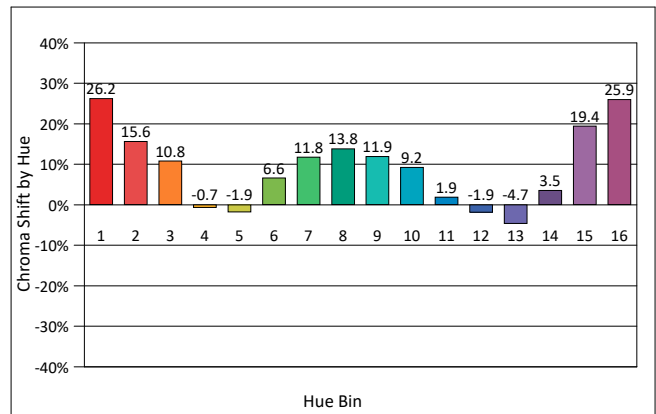
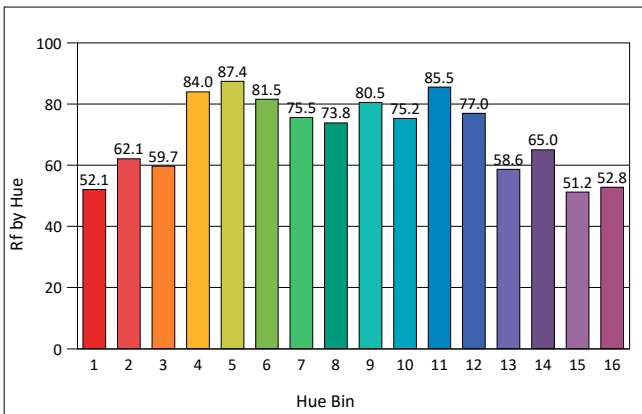
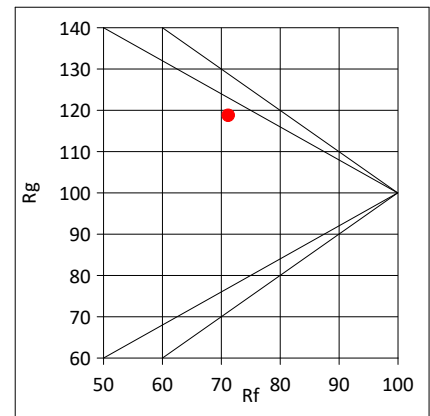
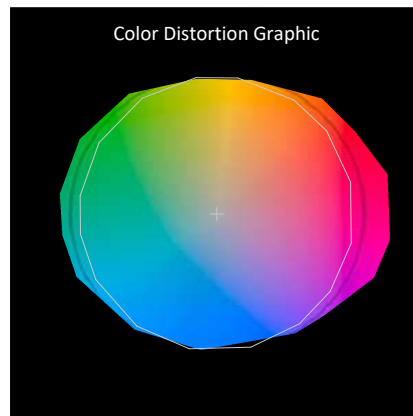
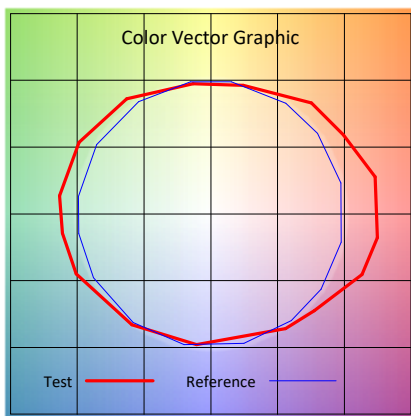
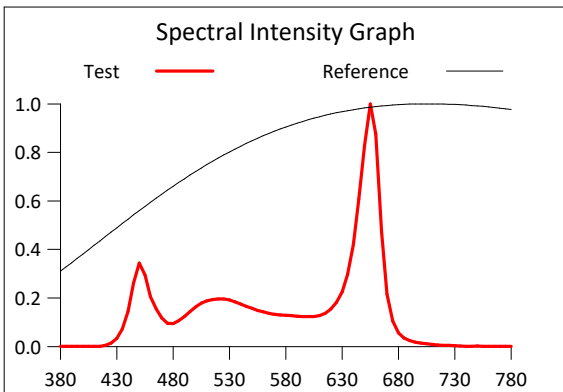
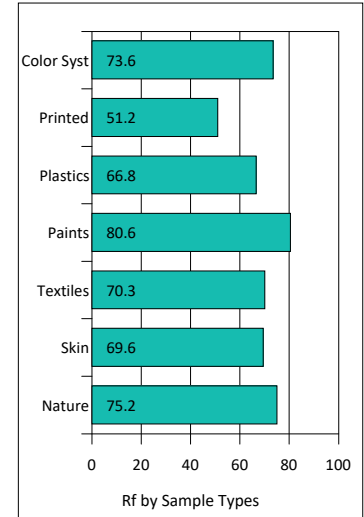
Operator : -

Test Date : 2026-03-03

Remark :

Rf: 71.2 CCT(K): 4104 u': 0.2337
 Rg: 118.7 LER: 215.4 Duv: -0.0178 v': 0.3187

Hue Bin	Rf	Graphic Shifts (%)	
		Chroma	Hue
1	52.1	26.2%	-0.6%
2	62.1	15.6%	-11.9%
3	59.7	10.8%	-15.7%
4	84.0	-0.7%	-9.0%
5	87.4	-1.9%	-1.5%
6	81.5	6.6%	6.1%
7	75.5	11.8%	5.8%
8	73.8	13.8%	2.4%
9	80.5	11.9%	-2.8%
10	75.2	9.2%	-9.7%
11	85.5	1.9%	0.2%
12	77.0	-1.9%	9.1%
13	58.6	-4.7%	32.9%
14	65.0	3.5%	18.6%
15	51.2	19.4%	26.2%
16	52.8	25.9%	8.7%



IES TM-30-2015 Test Report

Product Mark

Product Type : CBWW01-38UV310-1_v1 _ White Manufacturer : -

Temperature : 'C

Humidity : -%

Operator : -

Test Date : 2026-03-03

Remark :

