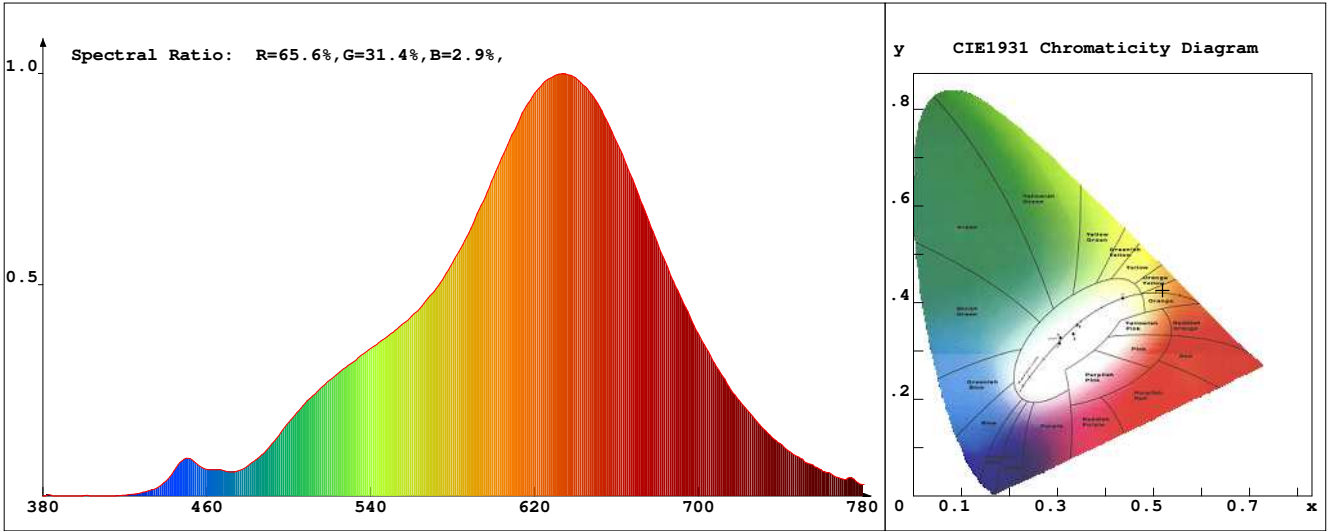


LED Test Report

Product Mark

Product Type : OR220-FA2-3200R2
 Temperature : 'C
 Operator : -
 Remark :

Manufacturer : -
 Humidity : -%
 Test Date : 2025-03-20



Chroma Parameters

Chro.Coor.:x=0.5191 y=0.4258 u=0.2936 v=0.3613 duv=0.0034
 CCT: 2144K Dominant Wave.:586.7nm Purity:83.7% Centre Wave:630.2nm
 Flux RGB Ratio:R=31.6%,G=67.7%,B=0.7% Peak Wave:631.6nm Half Width:114.9nm

Rendering Index:Ra= 94.4 CRI= 92.5

| | | | | | | | |
|------------------------------|--------|--------|-----------------------|--------|--------|-----------------------|--------|
| R1 =95 | R2 =96 | R3 =97 | R4 =98 | R5 =96 | R6 =99 | R7 =93 | R8 =83 |
| R9 =63 | R10=92 | R11=97 | R12=94 | R13=95 | R14=97 | R15=88 | |
| PPF:10.492umol/s (400-700nm) | | | PRF:2.1mW (400-700nm) | | | PAR:1.9mW (400-700nm) | |

Photo Parameters

Flux:606.85lm Effi.:70.7lm/W Radiant:2248.3mW Iv:0.0mcd
 Scotopic Flux:593.1Plm Effi.:0.0Plm/W S/P:1.0
 Efficiency:0.00 Effi Level:A++ (EU 874-2012) Photon Flux:11637.100umol/s (380-780nm)

Ele. Parameters

Forward Current:If=361.0mA Reverse Voltage:Vr=5.00V
 Forward Voltage:Vf=23.79V Reverse Current:Ir=0.00uA
 Power:P=8.601W

Instrument state

Instrument:Lisun LMS-8000 Integral Time: 188.516ms VPeak: 13800
 VDark: 1299 Scan Range: 380-780nm Product ID: 201508924

IES TM-30-2015 Test Report

Product Mark

Product Type : OR220-FA2-3200R2

Temperature : 'C

Operator : -

Remark :

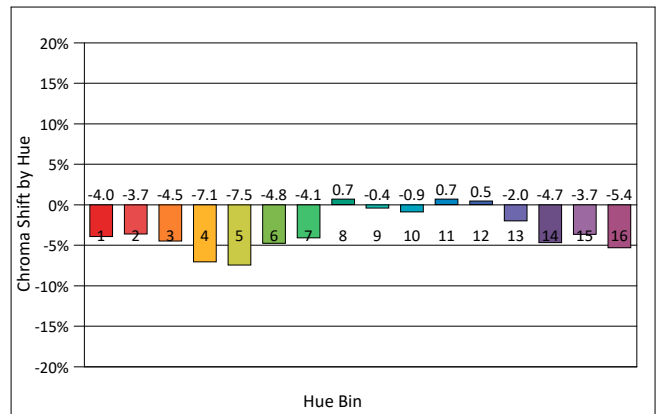
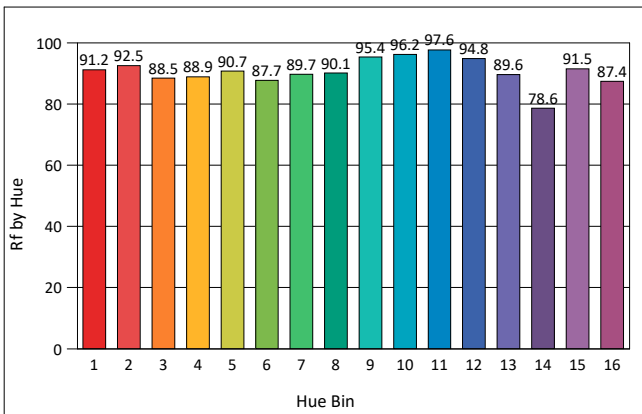
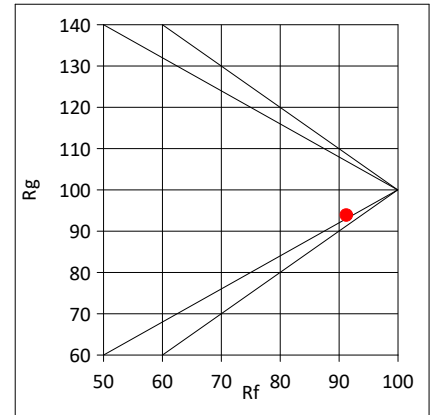
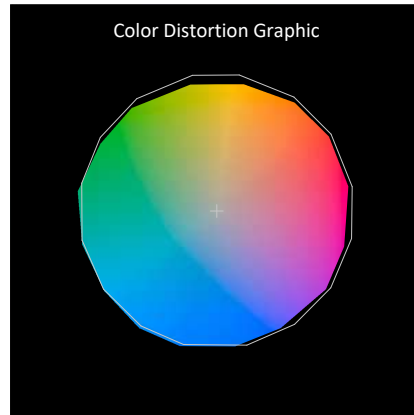
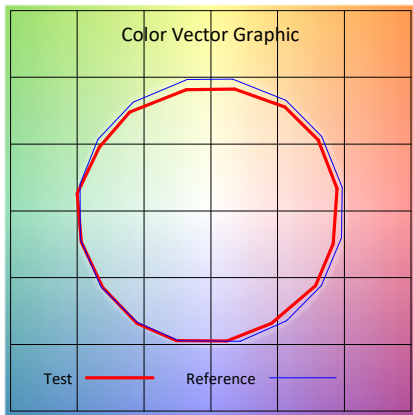
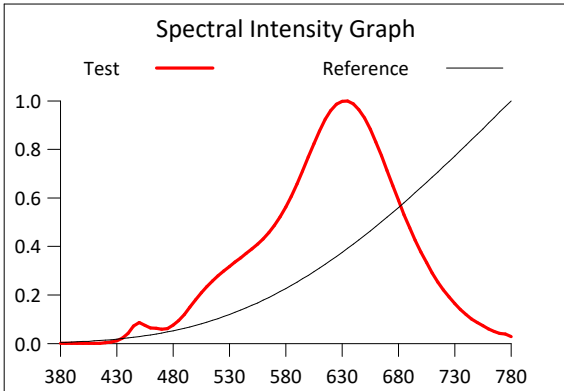
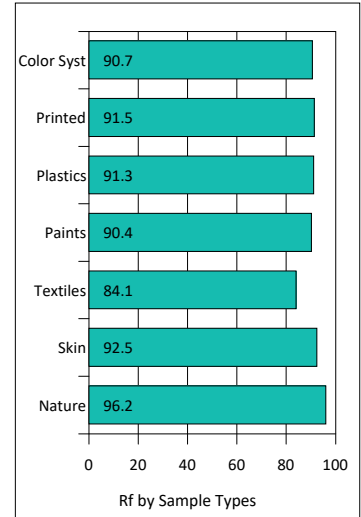
Manufacturer : -

Humidity : -%

Test Date : 2025-03-20

Rf: 91.3 CCT(K): 2144 u': 0.2936
 Rg: 93.8 LER: 257.0 Duv: 0.0034 v': 0.3613

| Hue Bin | Rf | Graphic Shifts (%) | |
|---------|------|--------------------|--------|
| | | Chroma | Hue |
| 1 | 91.2 | -4.0% | -0.1% |
| 2 | 92.5 | -3.7% | -0.9% |
| 3 | 88.5 | -4.5% | -2.0% |
| 4 | 88.9 | -7.1% | -2.8% |
| 5 | 90.7 | -7.5% | 2.2% |
| 6 | 87.7 | -4.8% | 6.5% |
| 7 | 89.7 | -4.1% | 4.2% |
| 8 | 90.1 | 0.7% | 7.3% |
| 9 | 95.4 | -0.4% | 2.2% |
| 10 | 96.2 | -0.9% | 1.3% |
| 11 | 97.6 | 0.7% | 0.0% |
| 12 | 94.8 | 0.5% | -1.7% |
| 13 | 89.6 | -2.0% | -9.6% |
| 14 | 78.6 | -4.7% | -10.3% |
| 15 | 91.5 | -3.7% | -2.4% |
| 16 | 87.4 | -5.4% | -5.7% |



IES TM-30-2015 Test Report

Product Mark

Product Type : OR220-FA2-3200R2

Manufacturer : -

Temperature : 'C

Humidity : -%

Operator : -

Test Date : 2025-03-20

Remark :

