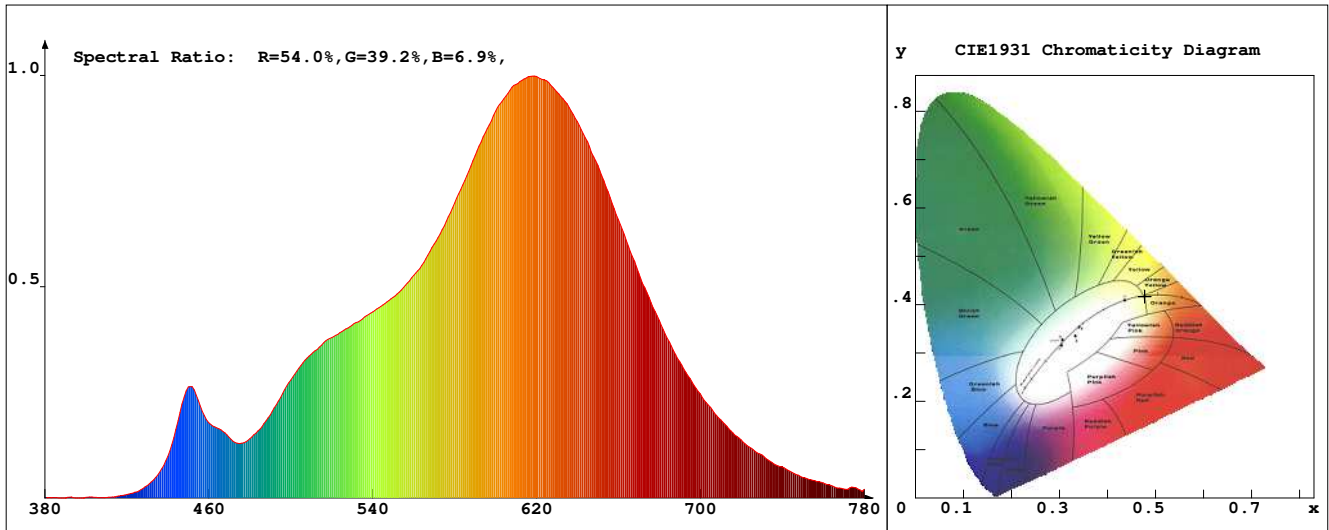


LED Test Report

Product Mark

Product Type : OR250-FA2-3200R2
 Temperature : 'C
 Operator : -
 Remark :

Manufacturer : -
 Humidity : -%
 Test Date : 2025-03-20



Chroma Parameters

Chro.Coord.:x=0.4776 y=0.4166 u=0.2713 v=0.3548 duv=0.0010
 CCT: 2513K Dominant Wave.:584.9nm Purity:68.4% Centre Wave:613.1nm
 Flux RGB Ratio:R=27.0%,G=71.8%,B=1.2% Peak Wave:617.5nm Half Width:116.3nm

Rendering Index:Ra= 90.2 CRI= 88.7

R1 =90	R2 =97	R3 =97	R4 =92	R5 =92	R6 =97	R7 =87	R8 =71
R9 =40	R10=93	R11=95	R12=90	R13=92	R14=99	R15=83	
PPF:12.564umol/s (400-700nm)			PRF:2.5mW (400-700nm)			PAR:2.3mW (400-700nm)	

Photo Parameters

Flux:830.48lm Effi.:96.5lm/W Radiant:2665.1mW Iv:0.0mcd
 Scotopic Flux:988.8Plm Effi.:0.0Plm/W S/P:1.2
 Efficiency:0.00 Effi Level:A++ (EU 874-2012) Photon Flux:13351.100umol/s (380-780nm)

Ele. Parameters

Forward Current:If=361.0mA Reverse Voltage:Vr=5.00V
 Forward Voltage:Vf=23.83V Reverse Current:Ir=0.00uA
 Power:P=8.631W

Instrument state

Instrument:Lisun LMS-8000 Integral Time: 183.895ms VPeak: 14168
 VDark: 1292 Scan Range: 380-780nm Product ID: 201508924

IES TM-30-2015 Test Report

Product Mark

Product Type : OR250-FA2-3200R2

Temperature : 'C

Operator : -

Remark :

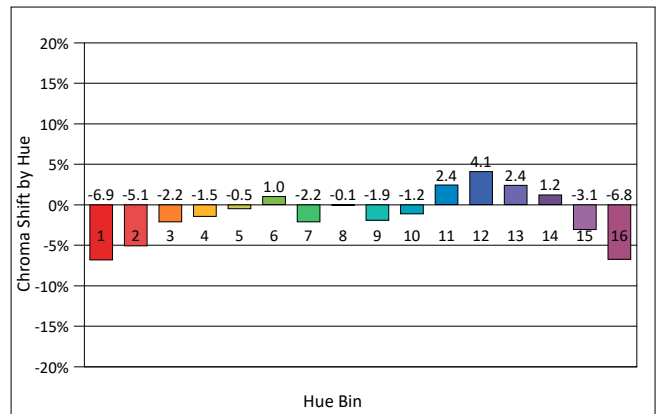
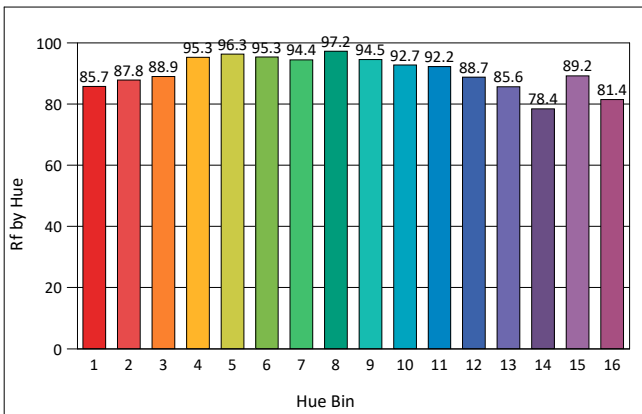
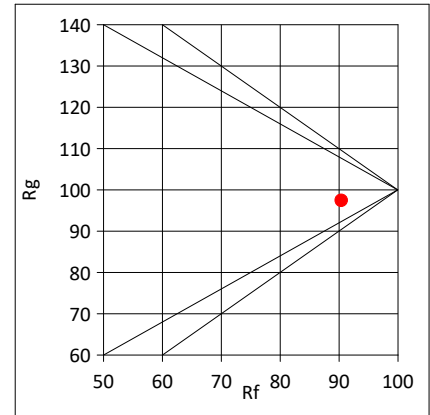
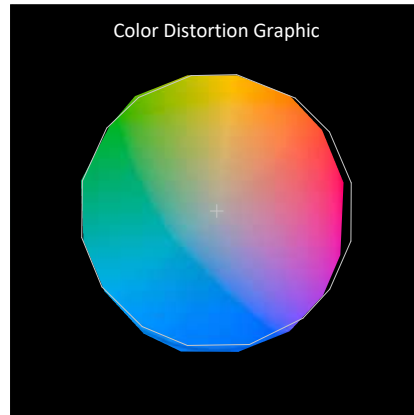
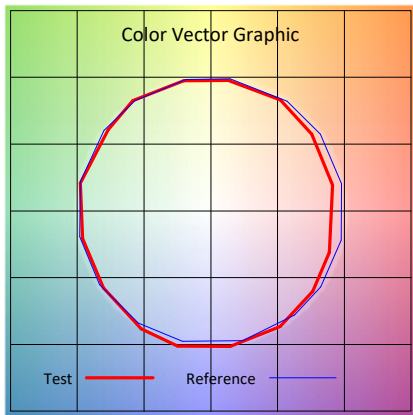
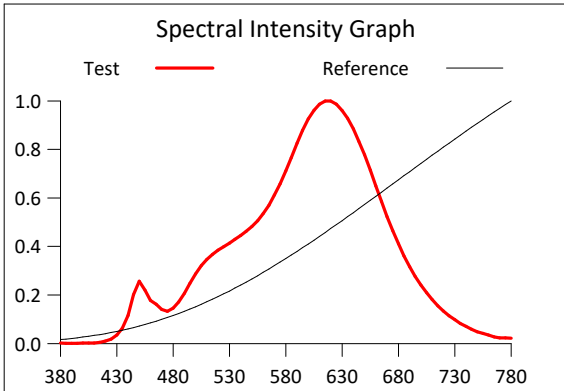
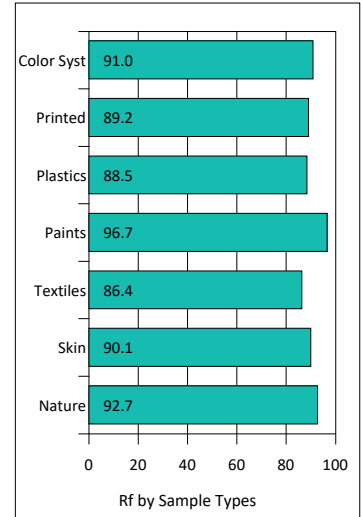
Manufacturer : -

Humidity : -%

Test Date : 2025-03-20

Rf: 90.4 CCT(K): 2513 u': 0.2713
 Rg: 97.4 LER: 297.7 Duv: 0.0010 v': 0.3548

Hue Bin	Rf	Graphic Shifts (%)	
		Chroma	Hue
1	85.7	-6.9%	0.3%
2	87.8	-5.1%	3.7%
3	88.9	-2.2%	4.8%
4	95.3	-1.5%	1.2%
5	96.3	-0.5%	2.0%
6	95.3	1.0%	1.5%
7	94.4	-2.2%	-2.1%
8	97.2	-0.1%	1.0%
9	94.5	-1.9%	1.9%
10	92.7	-1.2%	3.4%
11	92.2	2.4%	4.0%
12	88.7	4.1%	-3.0%
13	85.6	2.4%	-10.0%
14	78.4	1.2%	-13.7%
15	89.2	-3.1%	-6.2%
16	81.4	-6.8%	-10.5%



IES TM-30-2015 Test Report

Product Mark

Product Type : OR250-FA2-320OR2

Manufacturer : -

Temperature : 'C

Humidity : -%

Operator : -

Test Date : 2025-03-20

Remark :

