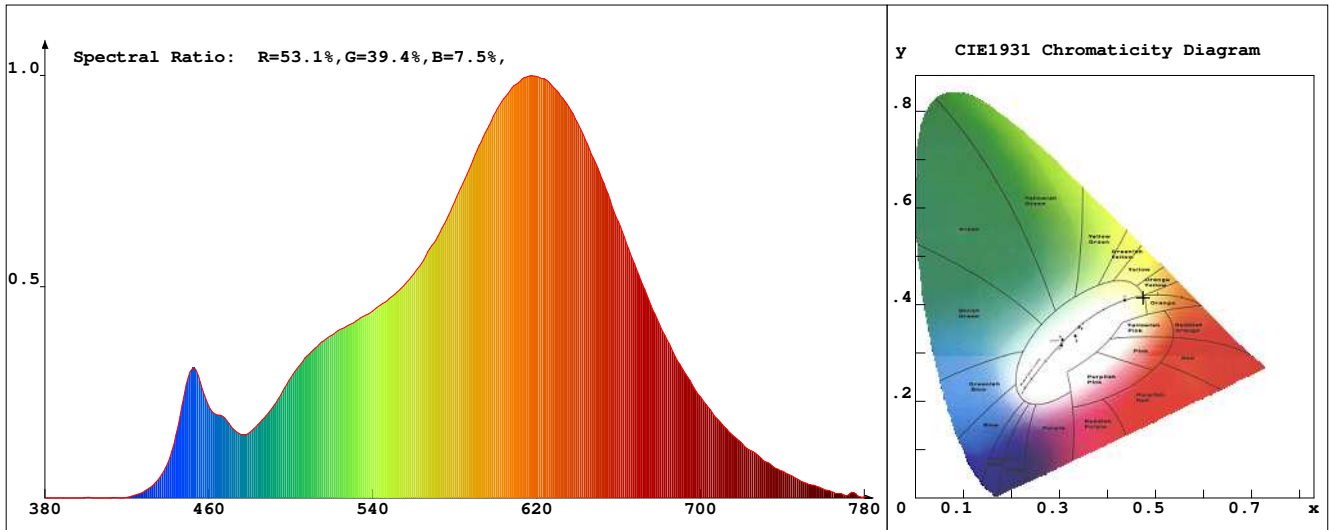


LED Test Report

Product Mark

Product Type : OR250-FA2-480R2-W5
 Temperature : 'C
 Operator : -
 Remark :

Manufacturer : -
 Humidity : -%
 Test Date : 2025-03-20



Chroma Parameters

Chro.Coor.:x=0.4741 y=0.4140 u=0.2701 v=0.3539 duv=0.0003
 CCT: 2538K Dominant Wave.:585.0nm Purity:66.6% Centre Wave:612.6nm
 Flux RGB Ratio:R=26.8%,G=71.8%,B=1.4% Peak Wave:617.5nm Half Width:117.3nm

Rendering Index:Ra= 89.6 CRI= 88.2

R1 =90	R2 =96	R3 =97	R4 =93	R5 =93	R6 =95	R7 =85	R8 =70
R9 =40	R10=93	R11=96	R12=87	R13=91	R14=99	R15=82	
PPF:8.357umol/s (400-700nm)			PRF:1.7mW (400-700nm)			PAR:1.5mW (400-700nm)	

Photo Parameters

Flux:556.84lm Effi.:72.2lm/W Radiant:1765.7mW Iv:0.0mcd
 Scotopic Flux:680.0Plm Effi.:0.0Plm/W S/P:1.2
 Efficiency:0.00 Effi Level:A++ (EU 874-2012) Photon Flux:8817.550umol/s (380-780nm)

Ele. Parameters

Forward Current:If=321.0mA Reverse Voltage:Vr=5.00V
 Forward Voltage:Vf=24.02V Reverse Current:Ir=0.00uA
 Power:P=7.720W

Instrument state

Instrument:Lisun LMS-8000 Integral Time: 277.188ms VPeak: 14152
 VDark: 1231 Scan Range: 380-780nm Product ID: 201508924

IES TM-30-2015 Test Report

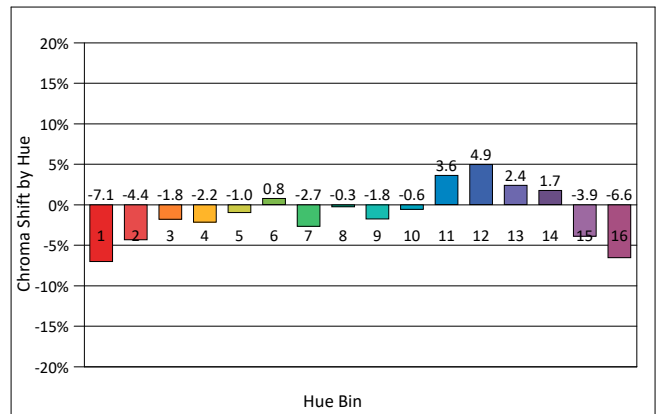
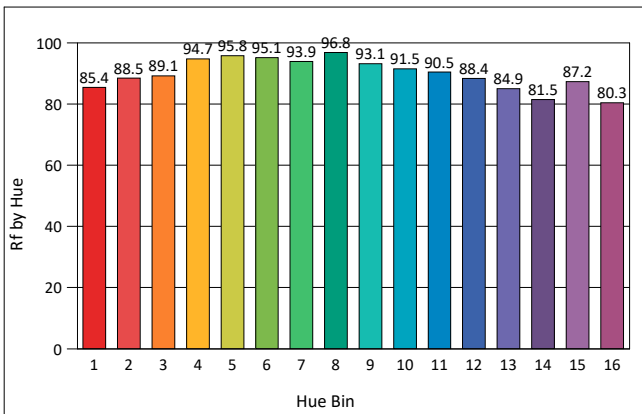
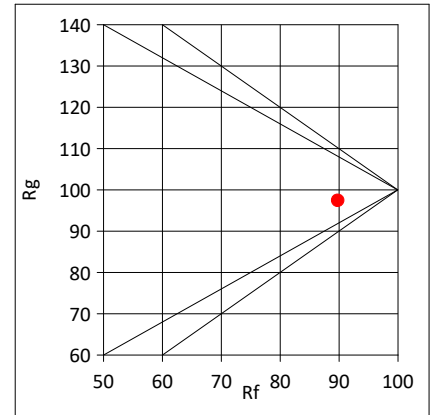
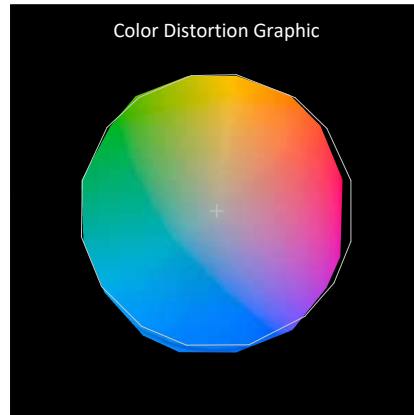
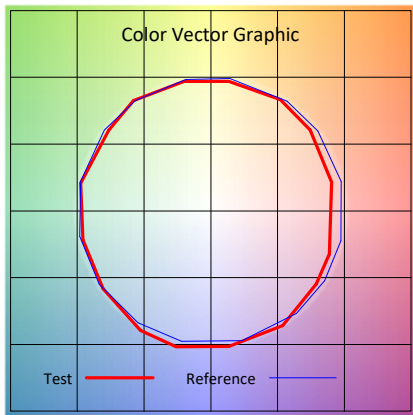
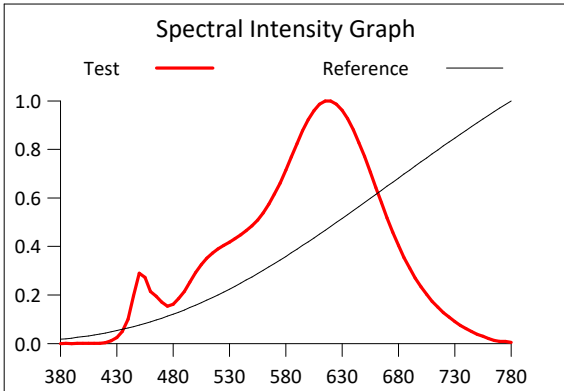
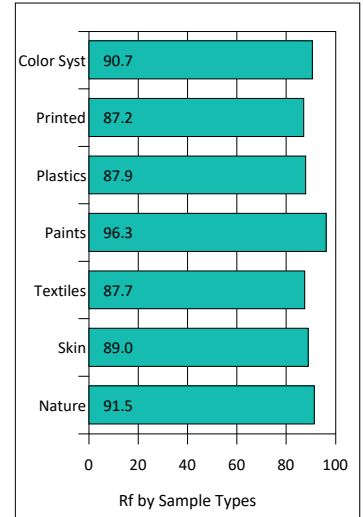
Product Mark

Product Type : OR250-FA2-480R2-W5
 Temperature : 'C
 Operator : -
 Remark :

Manufacturer : -
 Humidity : -%
 Test Date : 2025-03-20

Rf: 89.8 CCT(K): 2538 u': 0.2701
 Rg: 97.4 LER: 299.2 Duv: 0.0003 v': 0.3539

Hue Bin	Rf	Graphic Shifts (%)	
		Chroma	Hue
1	85.4	-7.1%	0.8%
2	88.5	-4.4%	3.6%
3	89.1	-1.8%	4.7%
4	94.7	-2.2%	0.4%
5	95.8	-1.0%	1.6%
6	95.1	0.8%	1.3%
7	93.9	-2.7%	-1.6%
8	96.8	-0.3%	1.4%
9	93.1	-1.8%	3.0%
10	91.5	-0.6%	4.4%
11	90.5	3.6%	4.8%
12	88.4	4.9%	-3.1%
13	84.9	2.4%	-10.5%
14	81.5	1.7%	-13.8%
15	87.2	-3.9%	-5.4%
16	80.3	-6.6%	-11.4%



IES TM-30-2015 Test Report

Product Mark

Product Type : OR250-FA2-480OR2-W5

Manufacturer : -

Temperature : 'C

Humidity : -%

Operator : -

Test Date : 2025-03-20

Remark :

