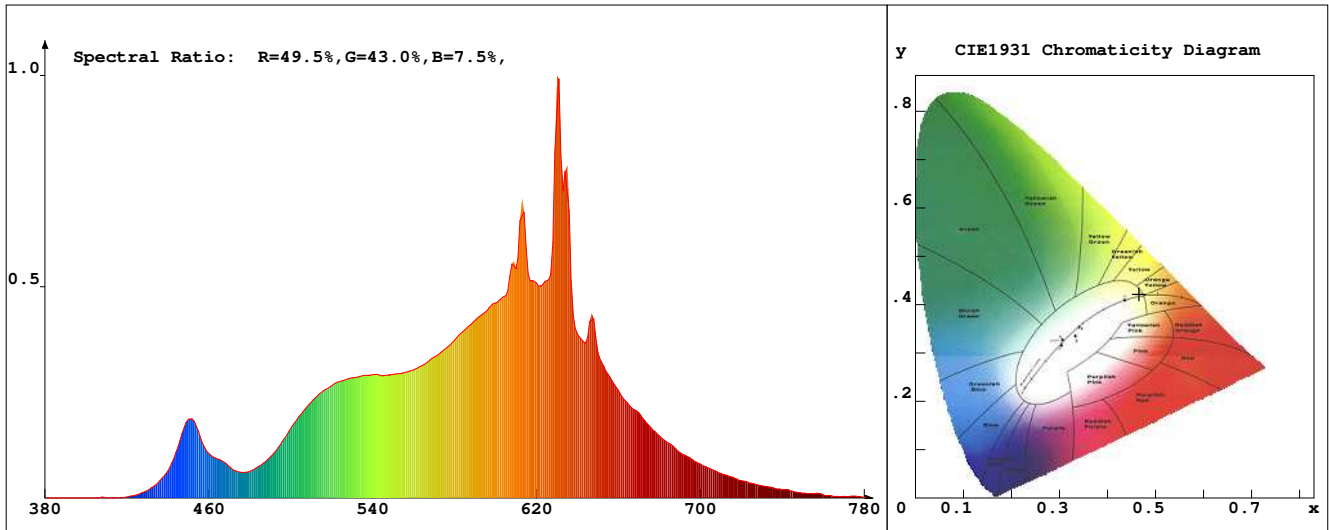


LED Test Report

Product Mark

Product Type : OR270-FA2-320QR2
 Temperature : 'C
 Operator : -
 Remark :

Manufacturer : -
 Humidity : -%
 Test Date : 02-07-2026



Chroma Parameters

Chro.Coor.:x=0.4658 y=0.4214 u=0.2615 v=0.3549 duv=0.0034
 CCT: 2701K Dominant Wave.:583.2nm Purity:66.3% Centre Wave:630.4nm
 Flux RGB Ratio:R=26.4%,G=72.5%,B=1.1% Peak Wave:629.6nm Half Width:11.0nm

Rendering Index:Ra= 94.9 CRI= 92.1

R1 =97	R2 =97	R3 =97	R4 =99	R5 =96	R6 =98	R7 =93	R8 =82
R9 =56	R10=92	R11=95	R12=86	R13=98	R14=97	R15=89	
PPF:15.816umol/s (400-700nm)			PRF:3.2mW (400-700nm)			PAR:2.9mW (400-700nm)	

Photo Parameters

Flux:1142.96lm Effi.:115.3lm/W Radiant:3318.1mW Iv:0.0mcd
 Scotopic Flux:1451.1Plm Effi.:0.0Plm/W S/P:1.3
 Efficiency:0.00 Effi Level:A++ (EU 874-2012) Photon Flux:16351.800umol/s (380-780nm)

Ele. Parameters

Forward Current:If=413.0mA Reverse Voltage:Vr=5.00V
 Forward Voltage:Vf=24.00V Reverse Current:Ir=0.00uA
 Power:P=9.931W

Instrument state

Instrument:Lisun LMS-8000 Integral Time: 56.313ms VPeak: 13400
 VDark: 1272 Scan Range: 380-780nm Product ID: 201508924

IES TM-30-2015 Test Report

Product Mark

Product Type : OR270-FA2-320QR2

Temperature : 'C

Operator : -

Remark :

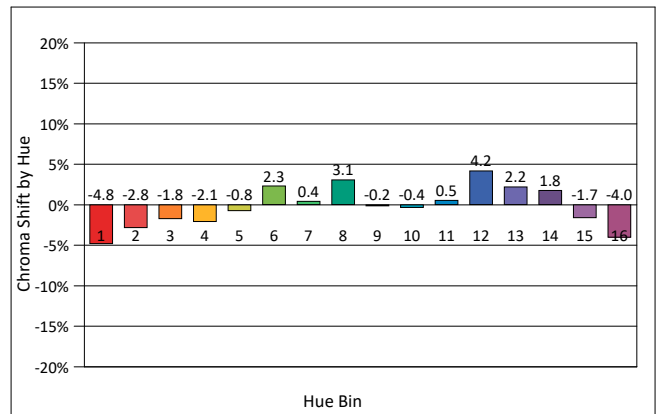
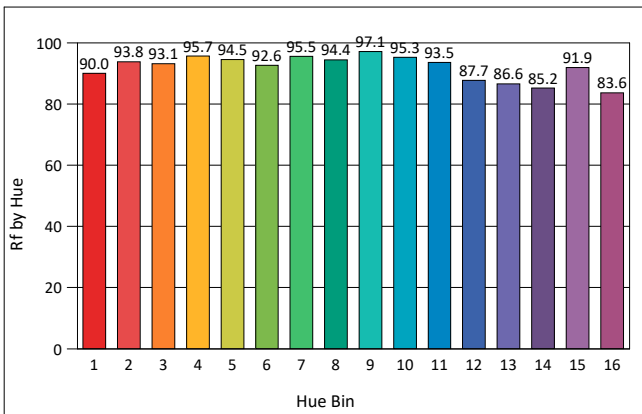
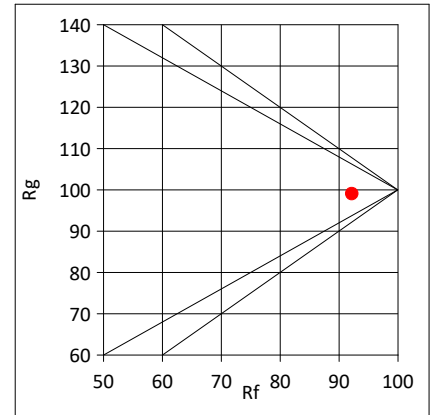
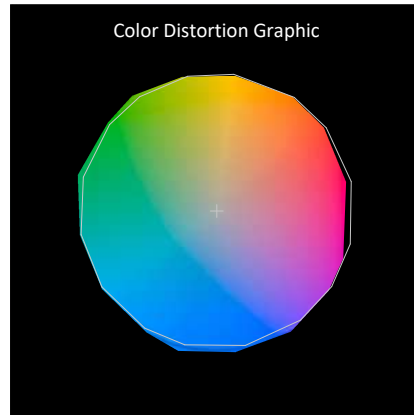
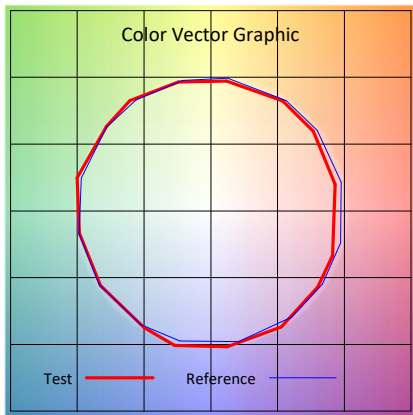
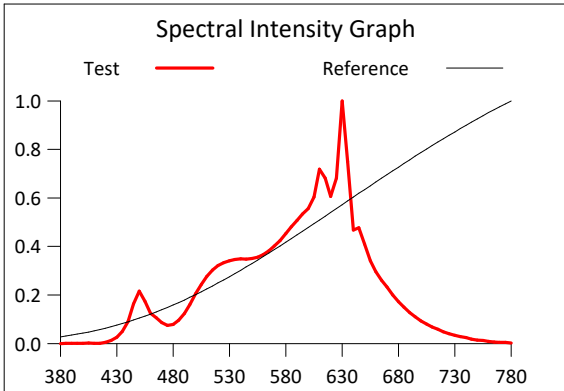
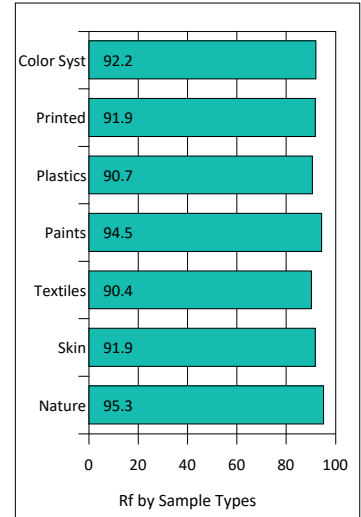
Manufacturer : -

Humidity : -%

Test Date : 02-07-2026

Rf: 92.2 CCT(K): 2701 u': 0.2615
 Rg: 99.0 LER: 323.8 Duv: 0.0034 v': 0.3549

Hue Bin	Rf	Graphic Shifts (%)	
		Chroma	Hue
1	90.0	-4.8%	-0.6%
2	93.8	-2.8%	1.0%
3	93.1	-1.8%	2.0%
4	95.7	-2.1%	0.3%
5	94.5	-0.8%	3.4%
6	92.6	2.3%	4.1%
7	95.5	0.4%	-0.4%
8	94.4	3.1%	0.4%
9	97.1	-0.2%	-0.3%
10	95.3	-0.4%	1.2%
11	93.5	0.5%	3.4%
12	87.7	4.2%	-3.3%
13	86.6	2.2%	-9.1%
14	85.2	1.8%	-10.8%
15	91.9	-1.7%	-3.7%
16	83.6	-4.0%	-10.3%



IES TM-30-2015 Test Report

Product Mark

Product Type : OR270-FA2-320QR2

Manufacturer : -

Temperature : 'C

Humidity : -%

Operator : -

Test Date : 02-07-2026

Remark :

