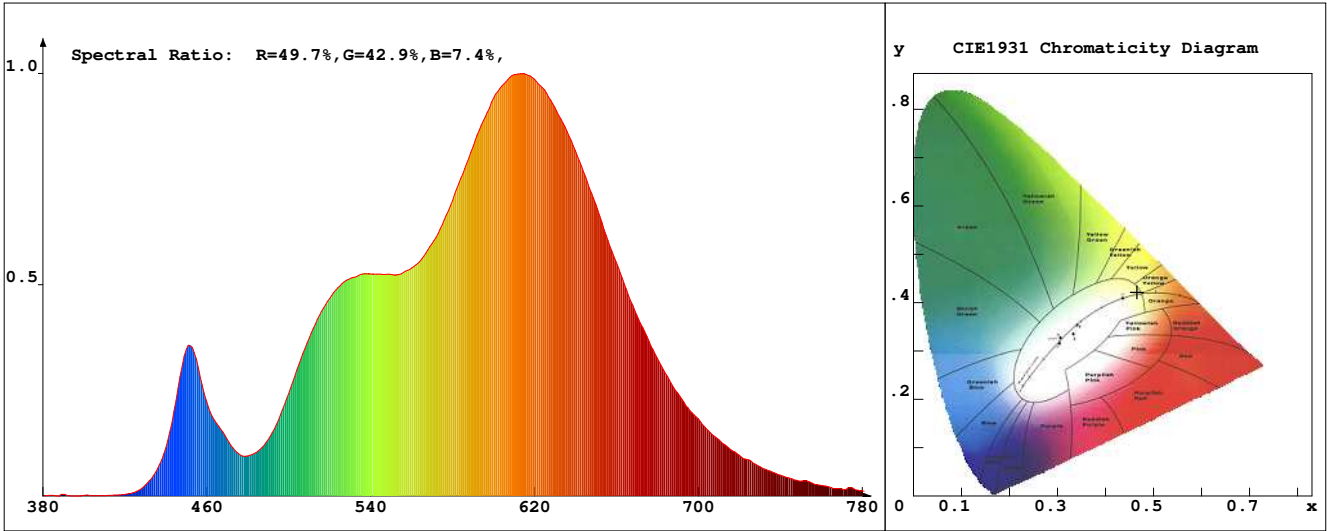


LED Test Report

Product Mark

Product Type : OR270-FA2-4800R2A
 Temperature : 'C
 Operator : -
 Remark :

Manufacturer : -
 Humidity : -%
 Test Date : 2025-03-20



Chroma Parameters

Chro.Coor.:x=0.4655 y=0.4213 u=0.2613 v=0.3548 duv=0.0034
 CCT: 2704K Dominant Wave.:583.1nm Purity:66.2% Centre Wave:593.7nm
 Flux RGB Ratio:R=25.3%,G=73.7%,B=1.0% Peak Wave:613.6nm Half Width:137.6nm

Rendering Index:Ra= 89.5 CRI= 86.4

R1 =89 R2 =93 R3 =97 R4 =94 R5 =91 R6 =95 R7 =88 R8 =70
 R9 =31 R10=84 R11=97 R12=77 R13=90 R14=97 R15=80
 PPF:9.467umol/s (400-700nm) PRF:1.9mW (400-700nm) PAR:1.7mW (400-700nm)

Photo Parameters

Flux:663.49lm Effi.:88.3lm/W Radiant:1999.6mW Iv:0.0mcd
 Scotopic Flux:814.1Plm Effi.:0.0Plm/W S/P:1.2
 Efficiency:0.00 Effi Level:A++ (EU 874-2012) Photon Flux:9902.470umol/s (380-780nm)

Ele. Parameters

Forward Current:If=313.0mA Reverse Voltage:Vr=5.00V
 Forward Voltage:Vf=24.00V Reverse Current:Ir=0.00uA
 Power:P=7.531W

Instrument state

Instrument:Lisun LMS-8000 Integral Time: 227.808ms VPeak: 13080
 VDark: 1446 Scan Range: 380-780nm Product ID: 201508924

IES TM-30-2015 Test Report

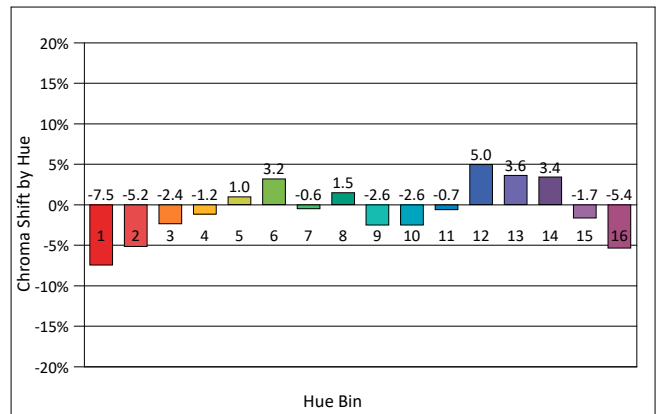
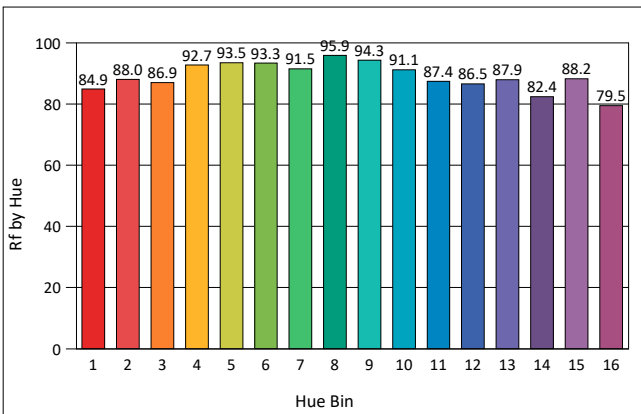
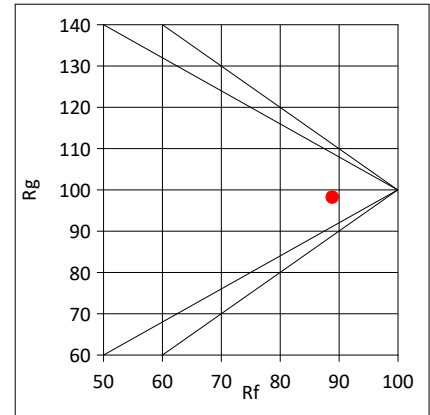
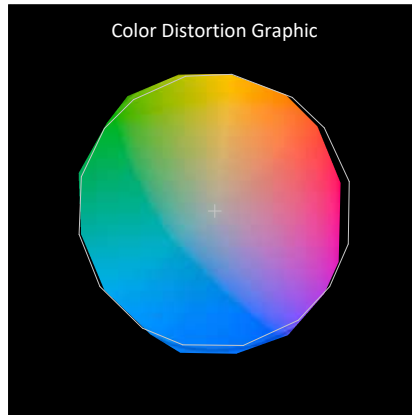
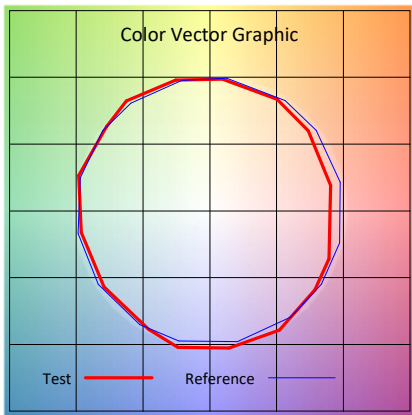
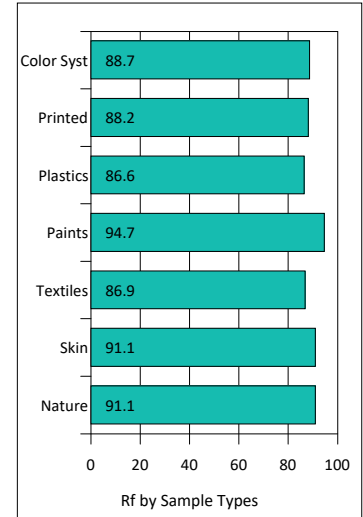
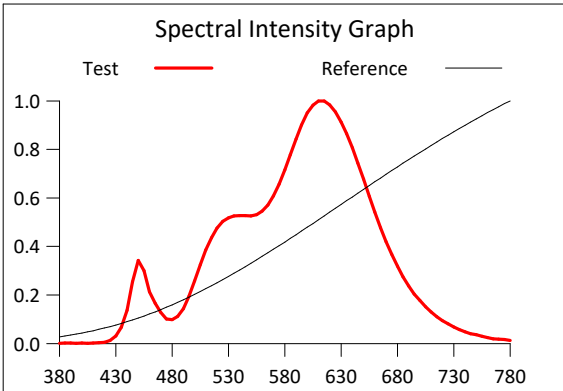
Product Mark

Product Type : OR270-FA2-480OR2A
 Temperature : 'C
 Operator : -
 Remark :

Manufacturer : -
 Humidity : -%
 Test Date : 2025-03-20

Rf: 88.9 CCT(K): 2704 u': 0.2613
 Rg: 98.2 LER: 320.2 Duv: 0.0034 v': 0.3548

Hue Bin	Rf	Graphic Shifts (%)	
		Chroma	Hue
1	84.9	-7.5%	-0.9%
2	88.0	-5.2%	3.2%
3	86.9	-2.4%	5.5%
4	92.7	-1.2%	3.0%
5	93.5	1.0%	4.3%
6	93.3	3.2%	1.9%
7	91.5	-0.6%	-4.2%
8	95.9	1.5%	-1.4%
9	94.3	-2.6%	-0.3%
10	91.1	-2.6%	3.8%
11	87.4	-0.7%	7.6%
12	86.5	5.0%	0.2%
13	87.9	3.6%	-7.1%
14	82.4	3.4%	-12.6%
15	88.2	-1.7%	-6.2%
16	79.5	-5.4%	-13.1%



IES TM-30-2015 Test Report

Product Mark

Product Type : OR270-FA2-480OR2A

Manufacturer : -

Temperature : 'C

Humidity : -%

Operator : -

Test Date : 2025-03-20

Remark :

