

LED Test Report

Product Mark

Product Type : F52-300-4000M1-W5

Manufacturer : -

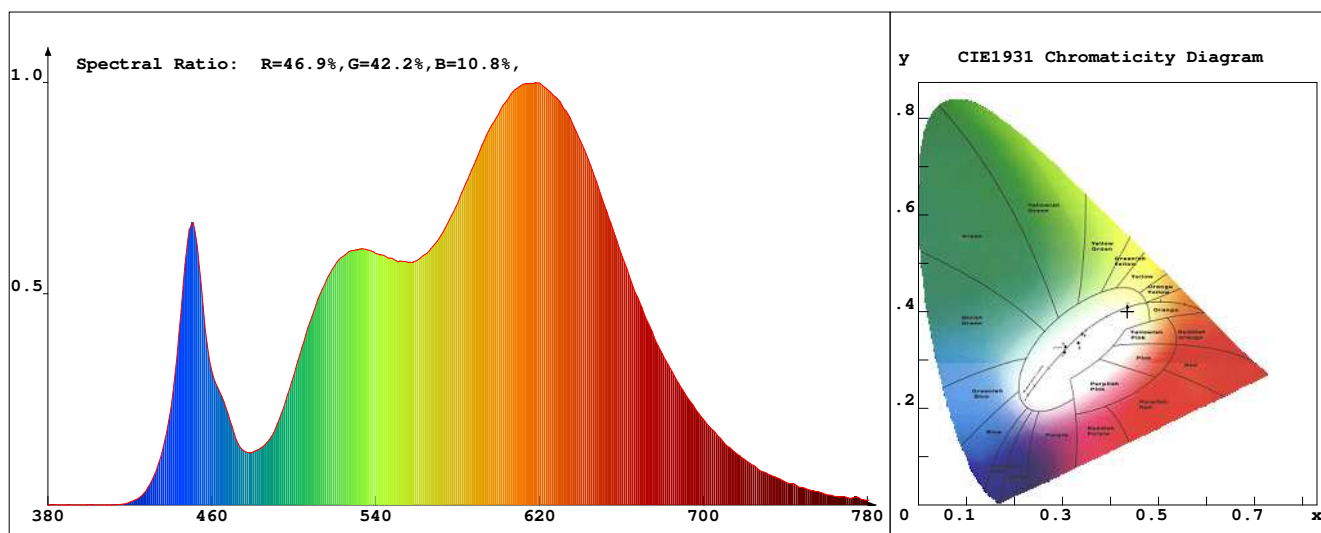
Temperature : 'C

Humidity : -%

Operator : -

Test Date : 2023-12-18

Remark :



Chroma Parameters

Chro.Coor.: $x=0.4351$ $y=0.4006$ $u=0.2509$ $v=0.3465$ $duv=-0.0011$

CCT: 3002K Dominant Wave.: 583.2nm Purity: 50.9% Centre Wave: 588.9nm

Flux RGB Ratio: R=24.0%, G=74.6%, B=1.4% Peak Wave: 618.5nm Half Width: 153.4nm

Rendering Index: Ra= 92.6 CRI= 89.6

R1 =95 R2 =95 R3 =95 R4 =95 R5 =97 R6 =96 R7 =90 R8 =80

R9 =53 R10=88 R11=92 R12=82 R13=95 R14=96 R15=88

PPF: 10.214 $\mu\text{mol/s}$ (400-700nm)

PRF: 2.1mW (400-700nm)

PAR: 1.9mW (400-700nm)

Photo Parameters

Flux: 655.15lm Effi.: 91.3lm/W Radiant: 2181.7mW Iv: 0.0mcd

Scotopic Flux: 921.8Plm Effi.: 0.0Plm/W S/P: 1.4

Efficiency: 0.00

Effi Level: A++ (EU 874-2012) Photon Flux: 10685.000 $\mu\text{mol/s}$ (380-780nm)

Ele. Parameters

Forward Current: $I_f=596.0\text{mA}$ Reverse Voltage: $V_r=5.00\text{V}$ Forward Voltage: $V_f=12.04\text{V}$ Reverse Current: $I_r=0.00\mu\text{A}$ Power: $P=7.191\text{W}$

Instrument state

Instrument: Lisun

Integral Time: 225.014ms

VPeak: 13384

VDark: 1245

Scan Range: 380-780nm

Product ID: 201508924

IES TM-30-2015 Test Report

Product Mark

Product Type : F52-300-4000M1-W5

Temperature : 'C

Operator : -

Remark :

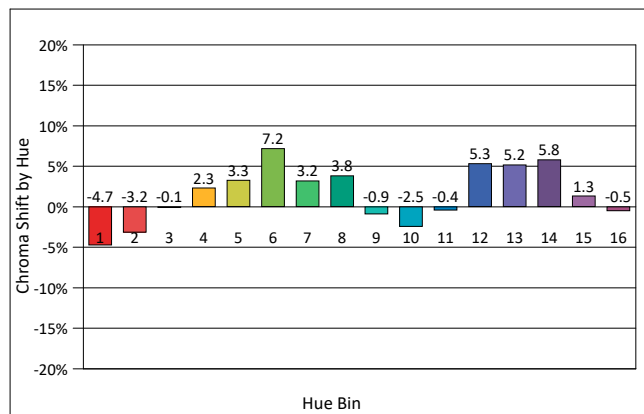
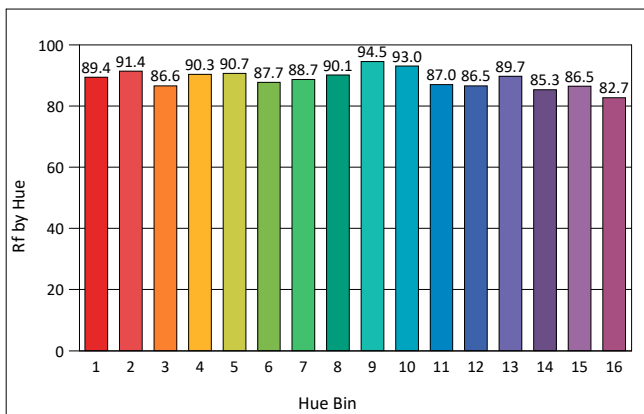
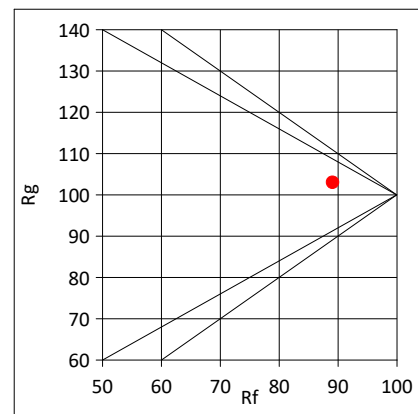
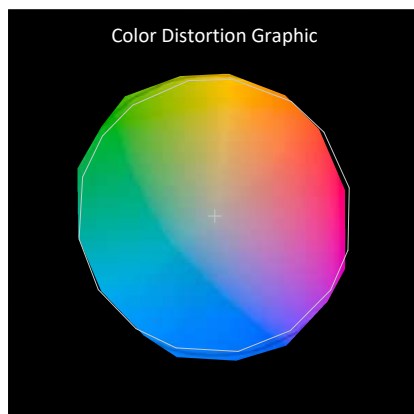
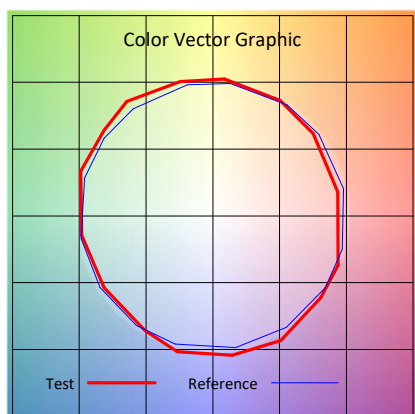
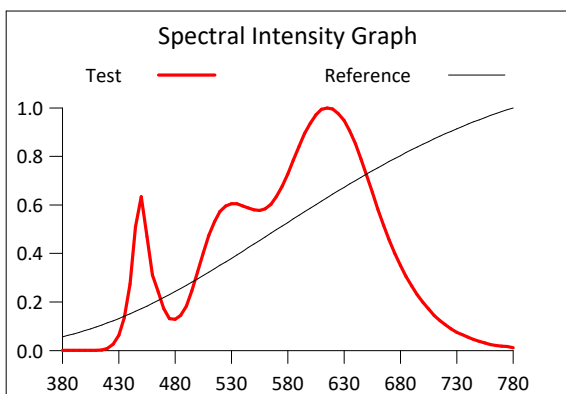
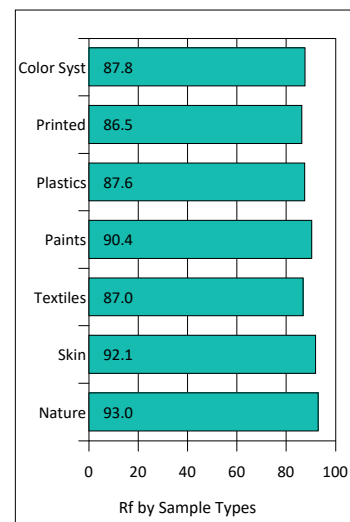
Manufacturer : -

Humidity : -%

Test Date : 2023-12-18

Rf: 89.1 CCT(K): 3002 u': 0.2509
 Rg: 103.0 LER: 308.9 Duv: -0.0011 v': 0.3465

Hue Bin	Rf	Graphic Shifts (%)	
		Chroma	Hue
1	89.4	-4.7%	-1.6%
2	91.4	-3.2%	3.0%
3	86.6	-0.1%	6.2%
4	90.3	2.3%	4.8%
5	90.7	3.3%	4.6%
6	87.7	7.2%	0.8%
7	88.7	3.2%	-5.1%
8	90.1	3.8%	-4.3%
9	94.5	-0.9%	-2.2%
10	93.0	-2.5%	1.9%
11	87.0	-0.4%	7.6%
12	86.5	5.3%	2.7%
13	89.7	5.2%	-3.6%
14	85.3	5.8%	-8.9%
15	86.5	1.3%	-7.9%
16	82.7	-0.5%	-12.4%



IES TM-30-2015 Test Report

Product Mark

Product Type : F52-300-4000M1-W5

Manufacturer : -

Temperature : 'C

Humidity : -%

Operator : -

Test Date : 2023-12-18

Remark :

