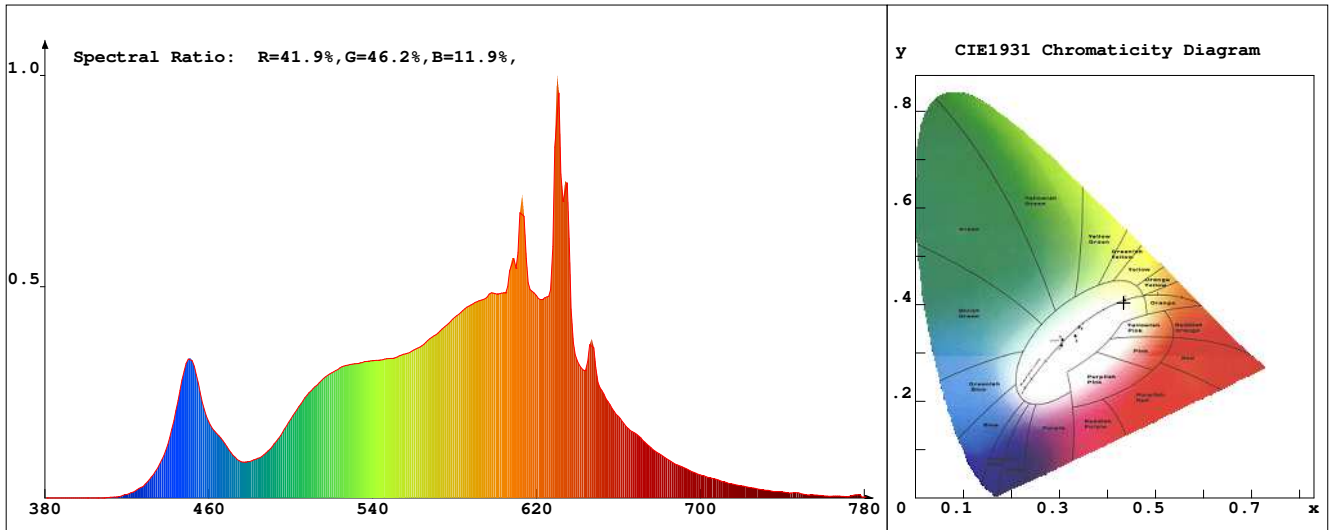


# LED Test Report

## Product Mark

Product Type : OR300-FA2-320QR2  
 Temperature : 'C  
 Operator : -  
 Remark :

Manufacturer : -  
 Humidity : -%  
 Test Date : 02-07-2026



## Chroma Parameters

Chro.Coord.:x=0.4338 y=0.4036 u=0.2488 v=0.3471 duv=0.0002  
 CCT: 3051K Dominant Wave.:582.5nm Purity:51.4% Centre Wave:630.8nm  
 Flux RGB Ratio:R=23.4%,G=75.1%,B=1.5% Peak Wave:629.4nm Half Width:9.4nm

## Rendering Index:Ra= 90.7 CRI= 87.7

|                              |        |        |                       |        |        |                       |        |
|------------------------------|--------|--------|-----------------------|--------|--------|-----------------------|--------|
| R1 =92                       | R2 =94 | R3 =97 | R4 =93                | R5 =92 | R6 =95 | R7 =89                | R8 =75 |
| R9 =40                       | R10=86 | R11=95 | R12=79                | R13=92 | R14=97 | R15=85                |        |
| PPF:16.889umol/s (400-700nm) |        |        | PRF:3.5mW (400-700nm) |        |        | PAR:3.1mW (400-700nm) |        |

## Photo Parameters

Flux:1280.70lm      Effi.:125.4lm/W      Radiant:3584.8mW      Iv:0.0mcd  
 Scotopic Flux:1800.3Plm      Effi.:0.0Plm/W      S/P:1.4  
 Efficiency:0.00      Effi Level:A++ (EU 874-2012)      Photon Flux:17289.600umol/s (380-780nm)

## Ele. Parameters

Forward Current:If=425.0mA      Reverse Voltage:Vr=5.00V  
 Forward Voltage:Vf=24.02V      Reverse Current:Ir=0.00uA  
 Power:P=10.220W

## Instrument state

Instrument:Lisun LMS-8000      Integral Time: 58.320ms      VPeak: 14024  
 VDark: 1190      Scan Range: 380-780nm      Product ID: 201508924

# IES TM-30-2015 Test Report

**Product Mark**

Product Type : OR300-FA2-320QR2

Temperature : 'C

Operator : -

Remark :

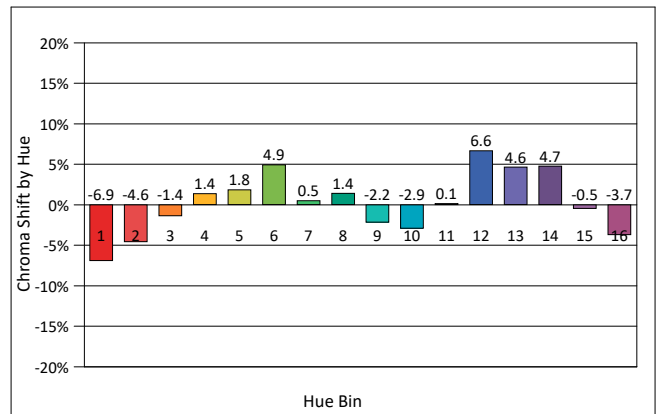
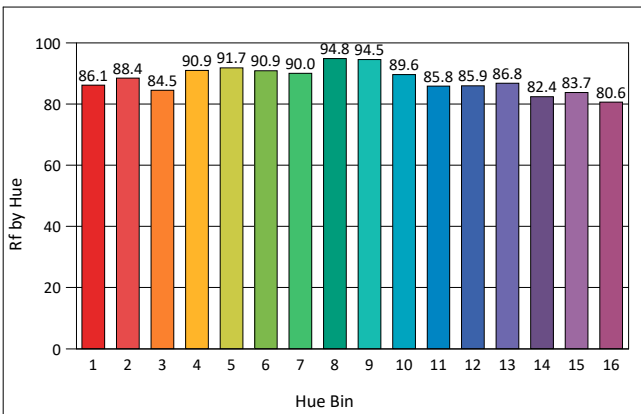
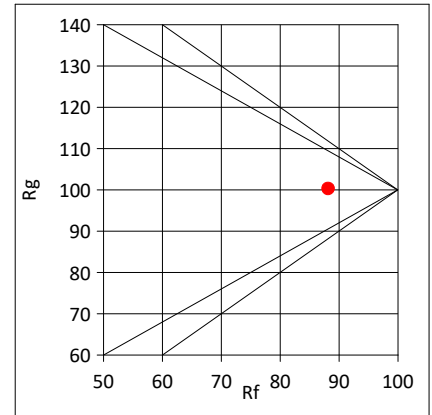
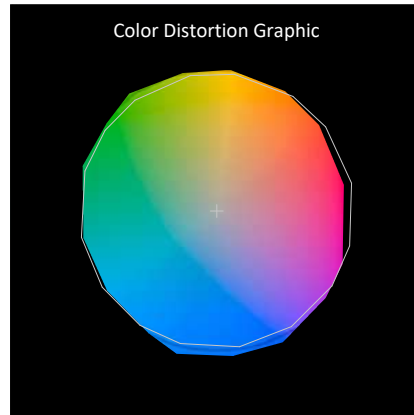
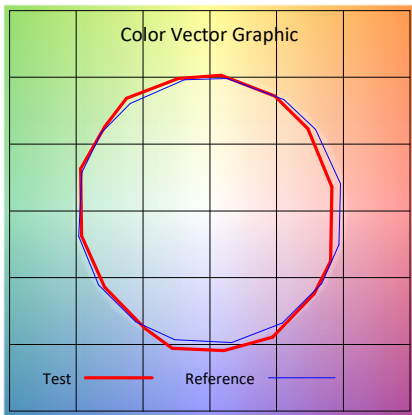
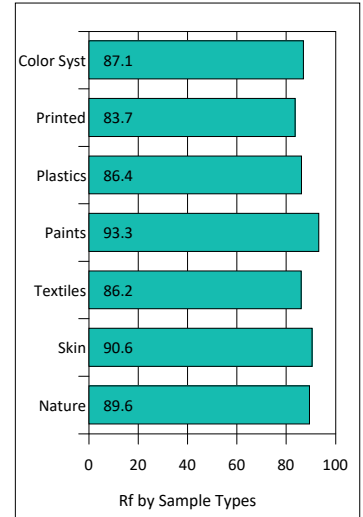
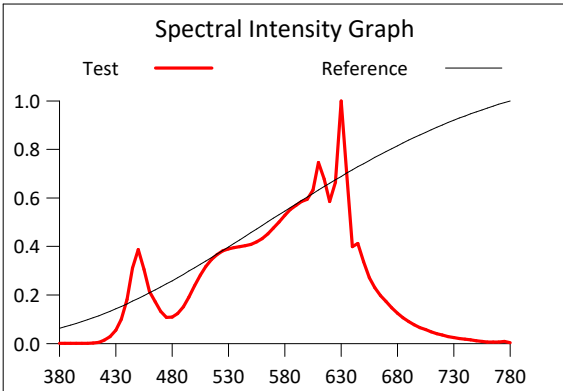
Manufacturer : -

Humidity : -%

Test Date : 02-07-2026

Rf: 88.2      CCT(K): 3051      u': 0.2488  
 Rg: 100.3    LER: 336.2    Duv: 0.0002    v': 0.3471

| Hue Bin | Rf   | Graphic Shifts (%) |        |
|---------|------|--------------------|--------|
|         |      | Chroma             | Hue    |
| 1       | 86.1 | -6.9%              | -1.1%  |
| 2       | 88.4 | -4.6%              | 3.8%   |
| 3       | 84.5 | -1.4%              | 7.1%   |
| 4       | 90.9 | 1.4%               | 4.7%   |
| 5       | 91.7 | 1.8%               | 4.2%   |
| 6       | 90.9 | 4.9%               | 0.4%   |
| 7       | 90.0 | 0.5%               | -4.8%  |
| 8       | 94.8 | 1.4%               | -2.4%  |
| 9       | 94.5 | -2.2%              | 0.2%   |
| 10      | 89.6 | -2.9%              | 3.9%   |
| 11      | 85.8 | 0.1%               | 8.2%   |
| 12      | 85.9 | 6.6%               | -0.6%  |
| 13      | 86.8 | 4.6%               | -7.0%  |
| 14      | 82.4 | 4.7%               | -11.9% |
| 15      | 83.7 | -0.5%              | -9.6%  |
| 16      | 80.6 | -3.7%              | -13.3% |



# IES TM-30-2015 Test Report

**Product Mark**

Product Type : OR300-FA2-320QR2

Manufacturer : -

Temperature : 'C

Humidity : -%

Operator : -

Test Date : 02-07-2026

Remark :

