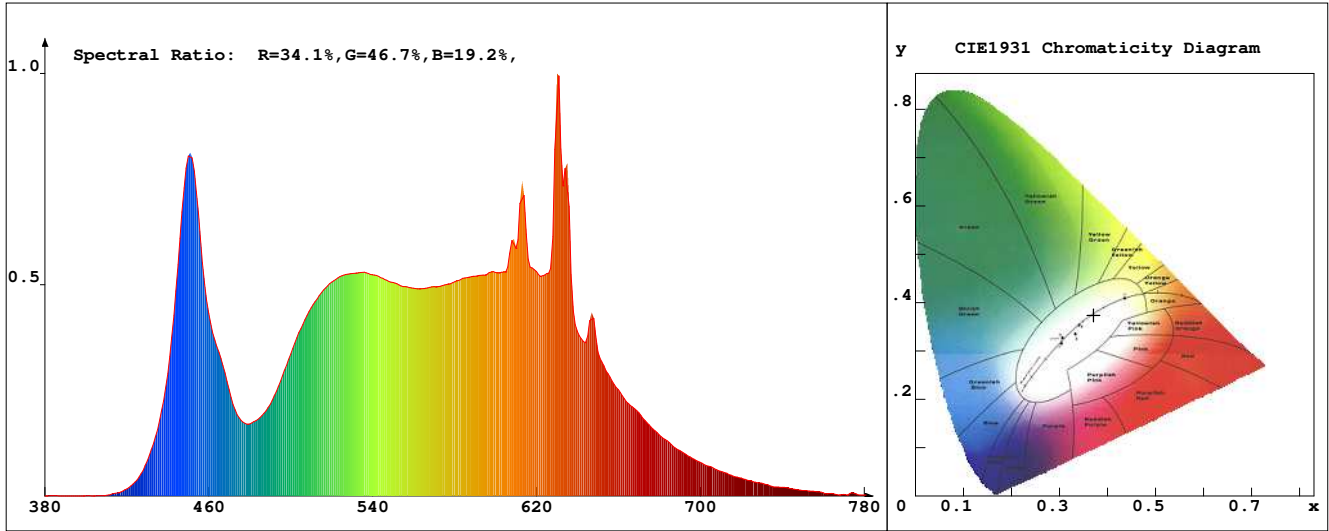


LED Test Report

Product Mark

Product Type : OR400-FA2-320QR2
 Temperature : 'C
 Operator : -
 Remark :

Manufacturer : -
 Humidity : -%
 Test Date : 02-07-2026



Chroma Parameters

Chro.Coor.:x=0.3711 y=0.3740 u=0.2200 v=0.3326 duv=0.0016
 CCT: 4247K Dominant Wave.:577.1nm Purity:23.6% Centre Wave:628.5nm
 Flux RGB Ratio:R=18.9%,G=78.6%,B=2.5% Peak Wave:629.6nm Half Width:15.3nm

Rendering Index:Ra= 93.3 CRI= 90.0

R1 =96	R2 =94	R3 =91	R4 =94	R5 =94	R6 =92	R7 =96	R8 =90
R9 =68	R10=84	R11=93	R12=70	R13=95	R14=94	R15=93	
PPF:17.796umol/s (400-700nm)			PRF:3.8mW (400-700nm)			PAR:3.3mW (400-700nm)	

Photo Parameters

Flux:1326.30lm Effi.:130.9lm/W Radiant:3880.8mW Iv:0.0mcd
 Scotopic Flux:2425.7Plm Effi.:0.0Plm/W S/P:1.8
 Efficiency:0.00 Effi Level:A++ (EU 874-2012) Photon Flux:18223.400umol/s (380-780nm)

Ele. Parameters

Forward Current:If=422.0mA Reverse Voltage:Vr=5.00V
 Forward Voltage:Vf=24.00V Reverse Current:Ir=0.00uA
 Power:P=10.160W

Instrument state

Instrument:Lisun LMS-8000 Integral Time: 81.071ms VPeak: 14968
 VDark: 1327 Scan Range: 380-780nm Product ID: 201508924

IES TM-30-2015 Test Report

Product Mark

Product Type : OR400-FA2-320QR2

Temperature : 'C

Operator : -

Remark :

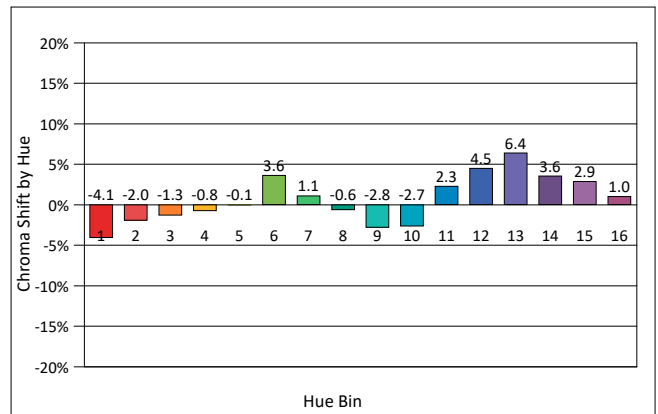
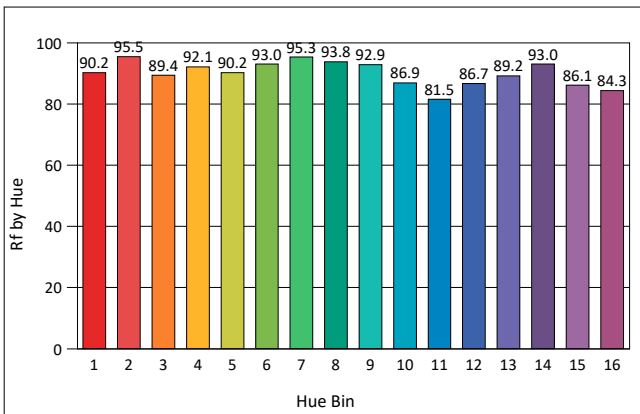
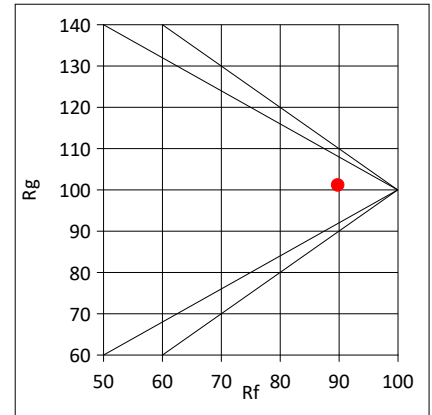
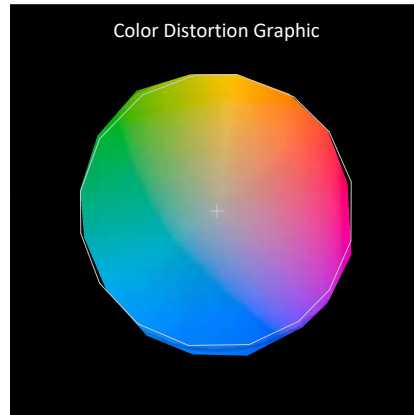
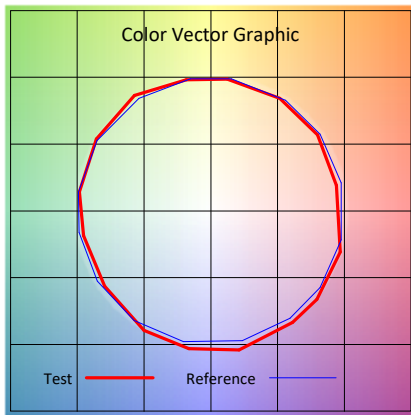
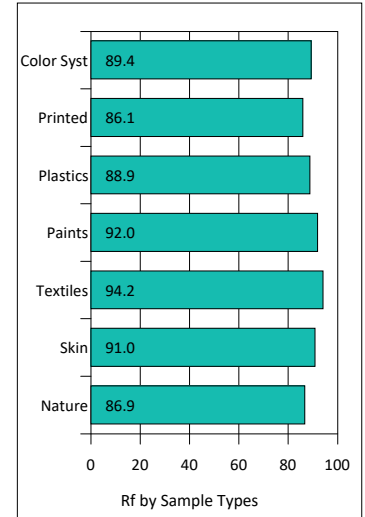
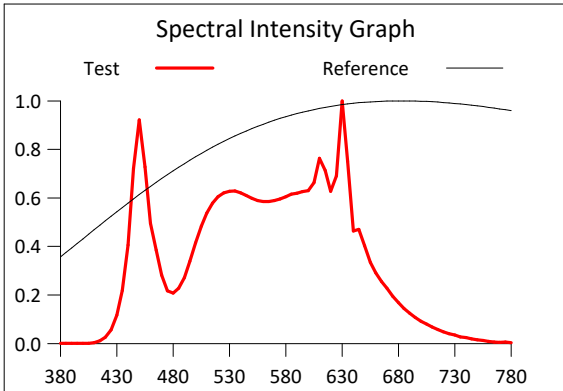
Manufacturer : -

Humidity : -%

Test Date : 02-07-2026

Rf: 89.8 CCT(K): 4247 u': 0.2200
 Rg: 101.1 LER: 319.8 Duv: 0.0016 v': 0.3326

Hue Bin	Rf	Graphic Shifts (%)	
		Chroma	Hue
1	90.2	-4.1%	-1.2%
2	95.5	-2.0%	0.8%
3	89.4	-1.3%	4.5%
4	92.1	-0.8%	3.1%
5	90.2	-0.1%	3.2%
6	93.0	3.6%	1.5%
7	95.3	1.1%	-0.7%
8	93.8	-0.6%	-0.4%
9	92.9	-2.8%	2.8%
10	86.9	-2.7%	6.3%
11	81.5	2.3%	10.3%
12	86.7	4.5%	4.9%
13	89.2	6.4%	-3.7%
14	93.0	3.6%	-0.2%
15	86.1	2.9%	-8.7%
16	84.3	1.0%	-9.0%



IES TM-30-2015 Test Report

Product Mark

Product Type : OR400-FA2-320QR2

Manufacturer : -

Temperature : 'C

Humidity : -%

Operator : -

Test Date : 02-07-2026

Remark :

