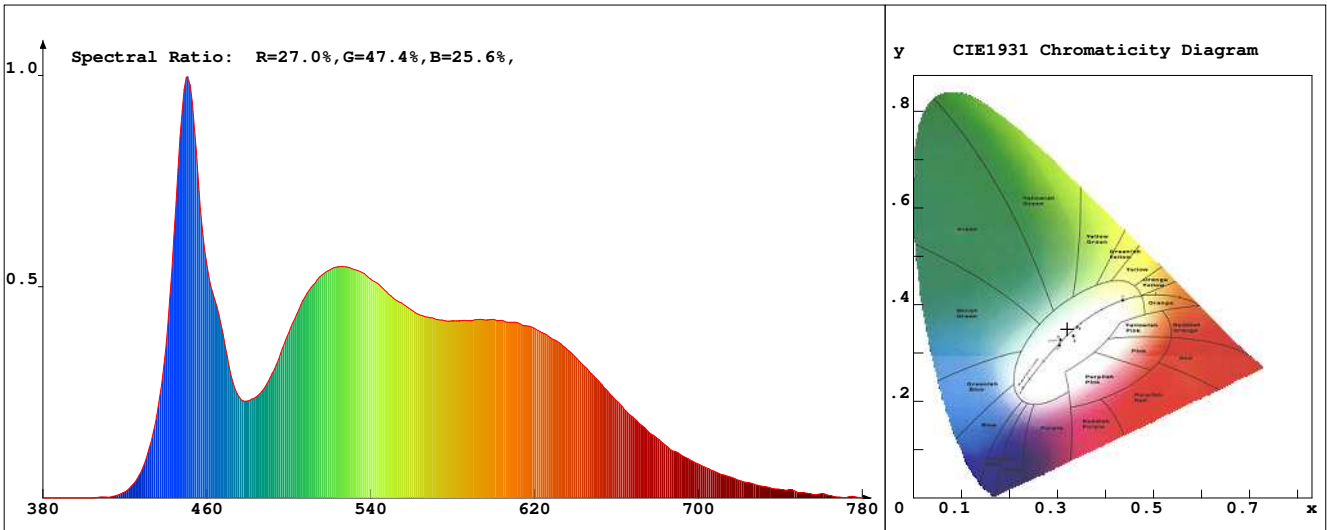


LED Test Report

Product Mark

Product Type : OR600-FA2-480R2-S1
 Temperature : 'C
 Operator : -
 Remark :

Manufacturer : -
 Humidity : -%
 Test Date : 2025-03-20



Chroma Parameters

Chro.Coord.:x=0.3205 y=0.3491 u=0.1958 v=0.3199 duv=0.0095
 CCT: 6019K Dominant Wave.:508.9nm Purity:4.0% Centre Wave:451.2nm
 Flux RGB Ratio:R=14.4%,G=82.1%,B=3.5% Peak Wave:449.6nm Half Width:19.5nm

Rendering Index:Ra= 90.6 CRI= 86.4

R1 =91	R2 =91	R3 =92	R4 =91	R5 =89	R6 =88	R7 =96	R8 =86
R9 =52	R10=79	R11=90	R12=65	R13=91	R14=96	R15=87	
PPF:17.187umol/s (400-700nm)			PRF:3.8mW (400-700nm)			PAR:3.2mW (400-700nm)	

Photo Parameters

Flux:1231.46lm Effi.:122.9lm/W Radiant:3843.9mW Iv:0.0mcd
 Scotopic Flux:2763.2Plm Effi.:0.0Plm/W S/P:2.2
 Efficiency:0.00 Effi Level:A++ (EU 874-2012) Photon Flux:17635.400umol/s (380-780nm)

Ele. Parameters

Forward Current:If=417.0mA Reverse Voltage:Vr=5.00V
 Forward Voltage:Vf=24.02V Reverse Current:Ir=0.00uA
 Power:P=10.020W

Instrument state

Instrument:Lisun LMS-8000 Integral Time: 93.770ms VPeak: 15160
 VDark: 1383 Scan Range: 380-780nm Product ID: 201508924

IES TM-30-2015 Test Report

Product Mark

Product Type : OR600-FA2-4800R2-S1

Temperature : 'C

Operator : -

Remark :

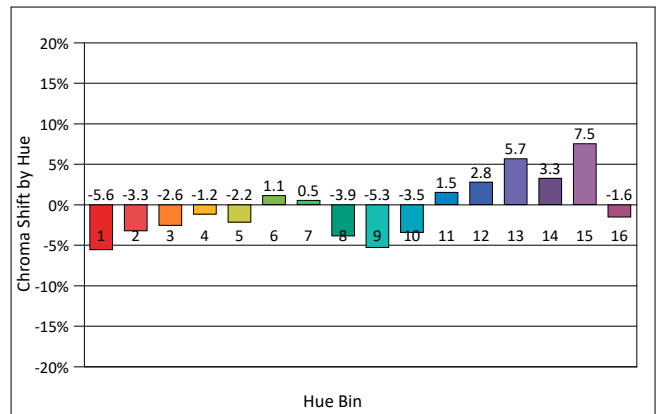
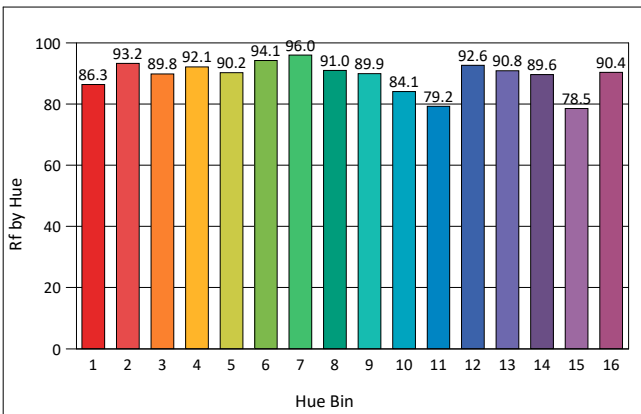
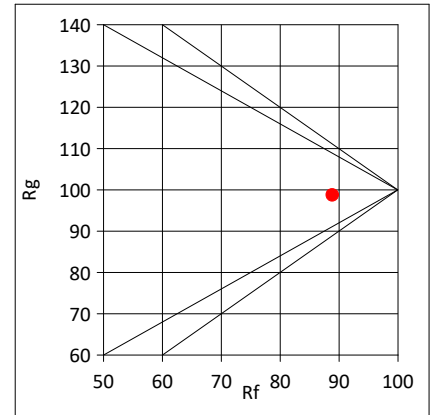
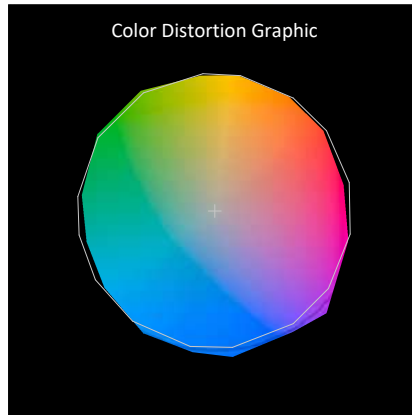
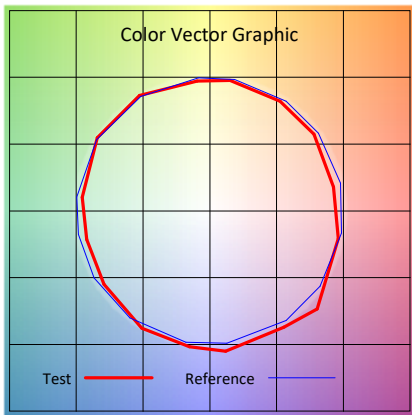
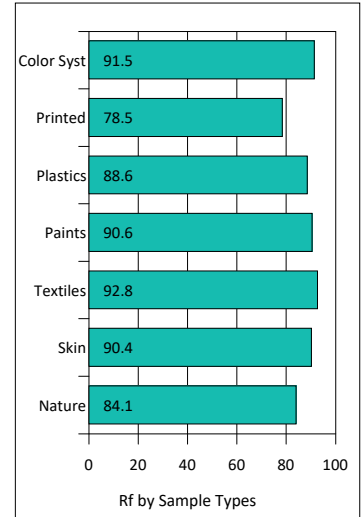
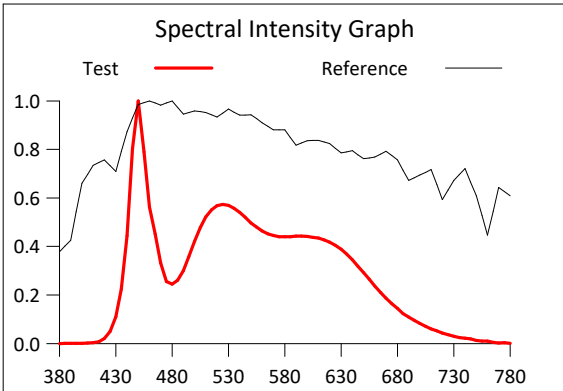
Manufacturer : -

Humidity : -%

Test Date : 2025-03-20

Rf: 88.9 CCT(K): 6019 u': 0.1958
 Rg: 98.7 LER: 305.0 Duv: 0.0095 v': 0.3199

Hue Bin	Rf	Graphic Shifts (%)	
		Chroma	Hue
1	86.3	-5.6%	-1.8%
2	93.2	-3.3%	1.2%
3	89.8	-2.6%	3.8%
4	92.1	-1.2%	3.2%
5	90.2	-2.2%	1.6%
6	94.1	1.1%	0.4%
7	96.0	0.5%	-1.6%
8	91.0	-3.9%	-0.6%
9	89.9	-5.3%	5.1%
10	84.1	-3.5%	8.2%
11	79.2	1.5%	11.6%
12	92.6	2.8%	3.4%
13	90.8	5.7%	-2.2%
14	89.6	3.3%	-4.1%
15	78.5	7.5%	-15.5%
16	90.4	-1.6%	-4.4%



IES TM-30-2015 Test Report

Product Mark

Product Type : OR600-FA2-480OR2-S1

Manufacturer : -

Temperature : 'C

Humidity : -%

Operator : -

Test Date : 2025-03-20

Remark :

