

LED Test Report

Product Mark

Product Type : NE4X8LT-600-120821-5

Manufacturer :

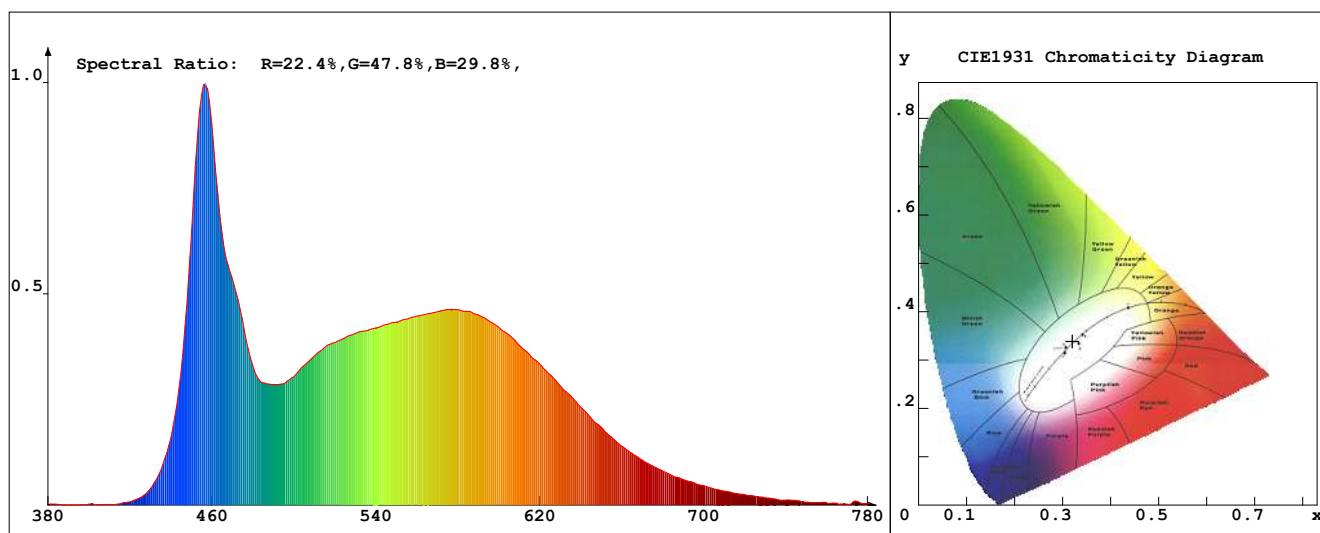
Temperature : 'C

Humidity : %

Operator :

Test Date : 31-01-23 00:53:36

Remark :



Chroma Parameters

Chro.Coord.: x=0.3202 y=0.3386 u=0.1994 v=0.3163 duv=0.0044

CCT: 6069K Dominant Wave.: 496.9nm Purity: 4.1% Centre Wave: 459.1nm

Flux RGB Ratio: R=13.3%, G=82.0%, B=4.7% Peak Wave: 455.8nm Half Width: 24.1nm

Rendering Index: Ra= 83.2 CRI= 79.6

R1 =82 R2 =94 R3 =94 R4 =77 R5 =82 R6 =88 R7 =84 R8 =66

R9 =7 R10=83 R11=77 R12=58 R13=86 R14=97 R15=77

PPF: 3.044umol/s (400-700nm)

PRF: 0.7mW (400-700nm)

PAR: 0.6mW (400-700nm)

Photo Parameters

Flux: 230.67lm Effi.: 26.7lm/W Radiant: 683.0mW Iv: 0.0mcd

Scotopic Flux: 521.4Plm Effi.: 0.0Plm/W S/P: 2.3

Efficiency: 0.00

Effi Level: A++ (EU 874-2012) Photon Flux: 3100.170umol/s (380-780nm)

Ele. Parameters

Voltage: U=12.10V

Current: I=0.7130A

Power: P=8.631W

Power Factor: PF=1.000

Instrument state

Instrument: Lisun

Integral Time: 407.602ms

VPeak: 15016

VDark: 1311

Scan Range: 380-780nm

Product ID: 201508924

IES TM-30-2015 Test Report

Product Mark

Product Type : NE4X8LT-600-120821-5

Temperature : °C

Operator :

Remark :

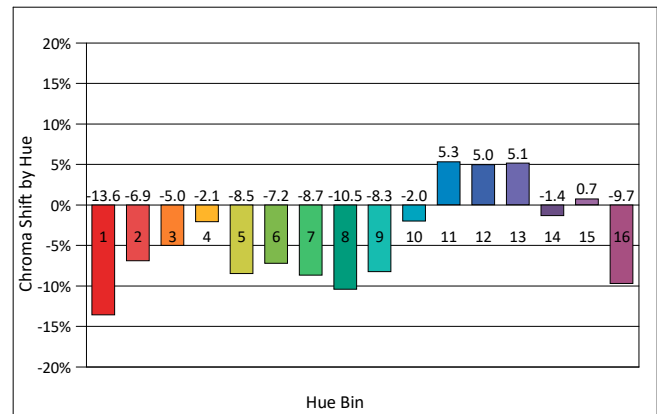
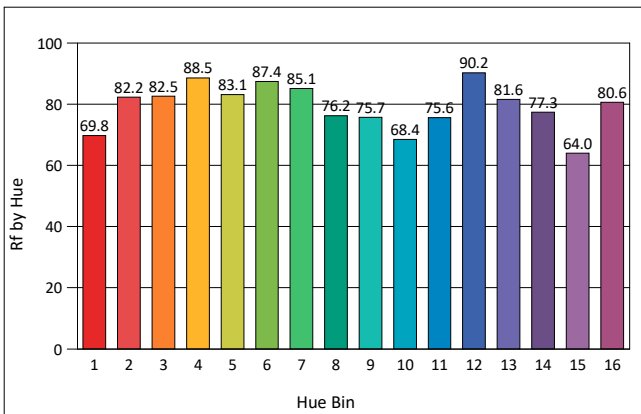
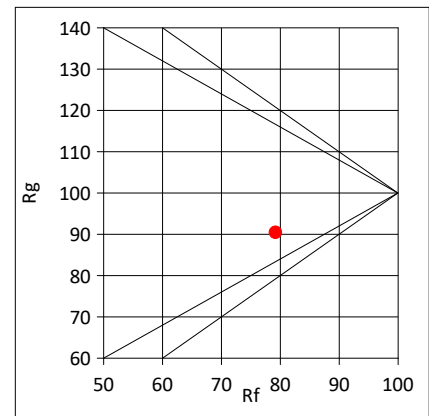
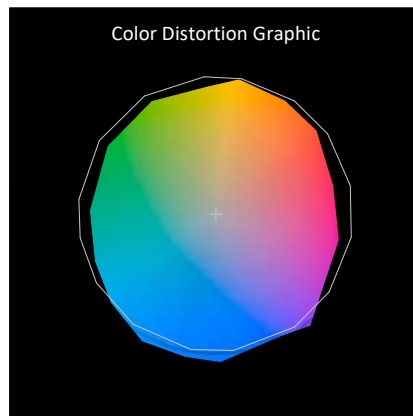
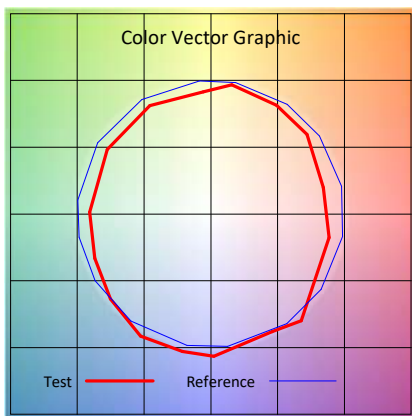
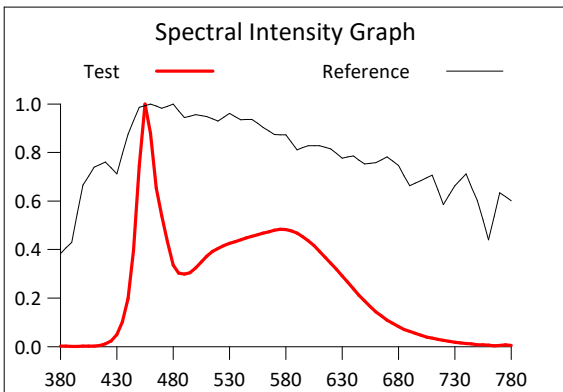
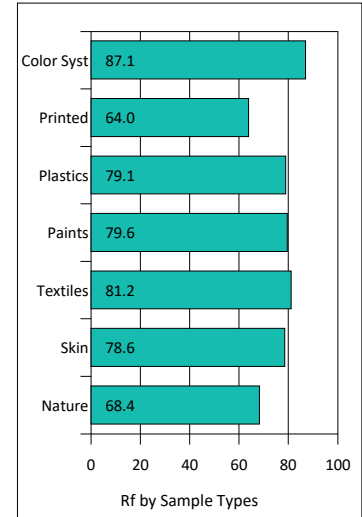
Manufacturer :

Humidity : %

Test Date : 31-01-23 00:53:36

Rf: 79.2 CCT(K): 6069 u': 0.1994
 Rg: 90.4 LER: 313.7 Duv: 0.0044 v': 0.3163

Hue Bin	Rf	Graphic Shifts (%)	
		Chroma	Hue
1	69.8	-13.6%	1.8%
2	82.2	-6.9%	6.0%
3	82.5	-5.0%	6.1%
4	88.5	-2.1%	2.5%
5	83.1	-8.5%	-1.1%
6	87.4	-7.2%	-2.5%
7	85.1	-8.7%	0.1%
8	76.2	-10.5%	7.3%
9	75.7	-8.3%	17.9%
10	68.4	-2.0%	17.6%
11	75.6	5.3%	12.4%
12	90.2	5.0%	-2.3%
13	81.6	5.1%	-11.5%
14	77.3	-1.4%	-12.6%
15	64.0	0.7%	-27.7%
16	80.6	-9.7%	-2.7%



IES TM-30-2015 Test Report

Product Mark

Product Type : NE4X8LT-600-120821-5

Manufacturer :

Temperature : 'C

Humidity : %

Operator :

Test Date : 31-01-23 00:53:36

Remark :

