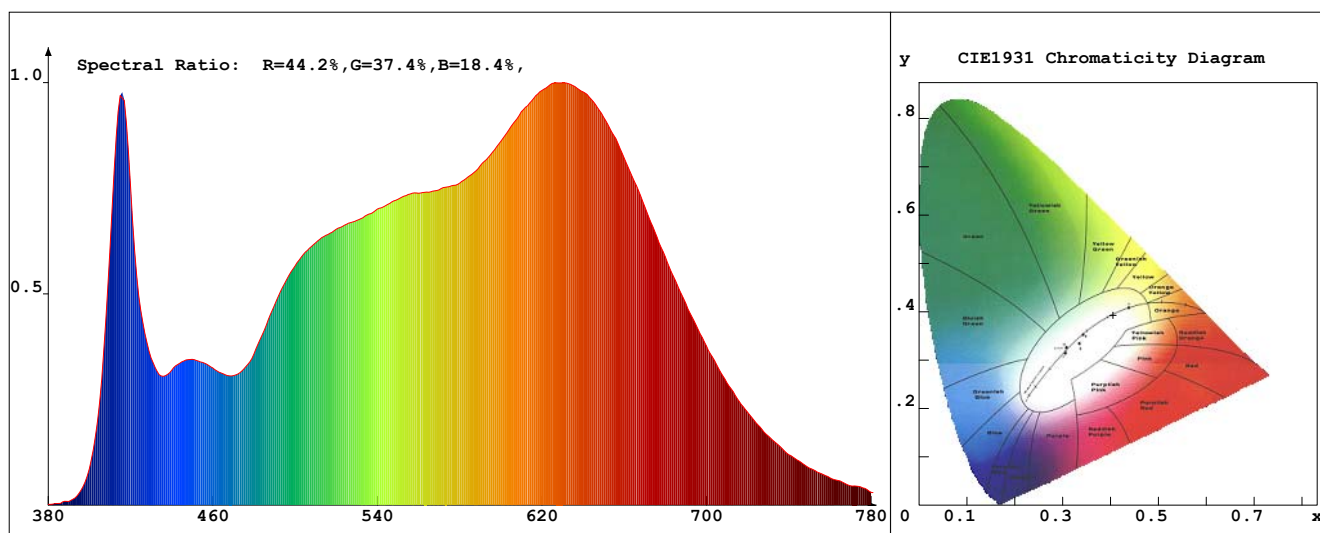


LED Test Report

Product Mark

Product Type : F52-35s-x1288U2/17 15.2W Manufacturer :
 Temperature : 'C Humidity : %
 Operator : Test Date : 2019-10-19
 Remark: Bin: R35 Lotto: 400



Chroma Parameters

Chro.Coord.:x=0.4051 y=0.3929 u=0.2347 v=0.3414 duv=0.0010
 CCT: 3523K Dominant Wave.:580.4nm Purity:39.5% Centre Wave:589.1nm
 Flux RGB Ratio:R=21.6%,G=76.2%,B=2.2% Peak Wave:625.5nm Half Width:195.0nm

Rendering Index:Ra= 96.8 CRI= 95.7

R1 =99	R2 =98	R3 =95	R4 =94	R5 =97	R6 =99	R7 =96	R8 =96
R9 =91	R10=95	R11=94	R12=86	R13=99	R14=97	R15=97	
PPF:26.721umol/s (400-700nm)			PRF:5.6mW (400-700nm)			PAR:4.8mW (400-700nm)	

Photo Parameters

Flux:1630.57lm Effi.:107.1lm/W Radiant:5981.0mW Iv:0.0mcd
 Scotopic Flux:2717.4Plm Effi.:0.0Plm/W S/P:1.7
 Efficiency:0.00 Effi Level:A++ (EU 874-2012) Photon Flux:28781.699umol/s (380-780nm)

Ele. Parameters

Forward Current:If=630.0mA Reverse Voltage:Vr=5.00V
 Forward Voltage:Vf=24.16V Reverse Current:Ir=0.00uA
 Power:P=15.231W

Instrument state

Instrument: - Integral Time: 109.566ms VPeak: 15672
 VDark: 1110 Scan Range: 380-780nm Product ID: 201508924

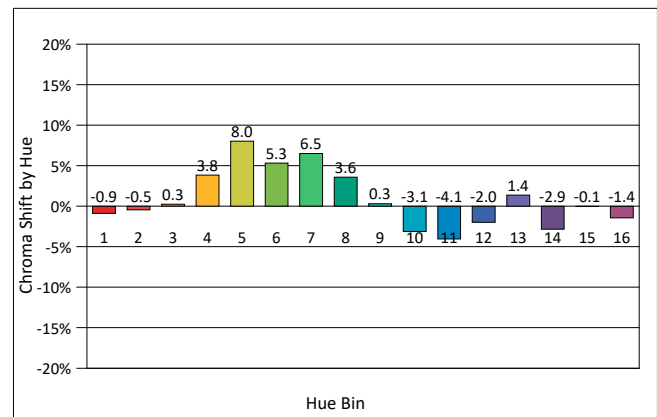
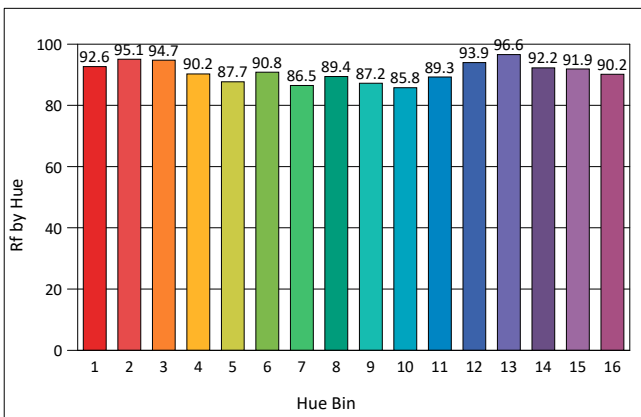
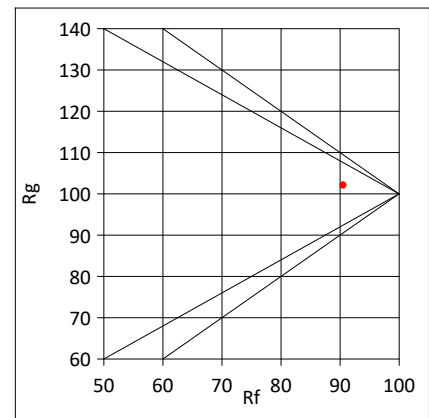
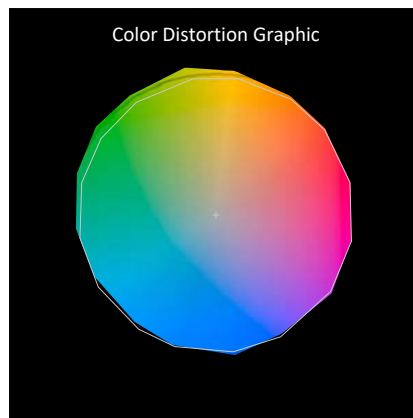
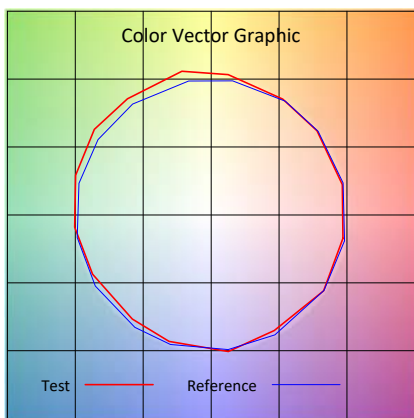
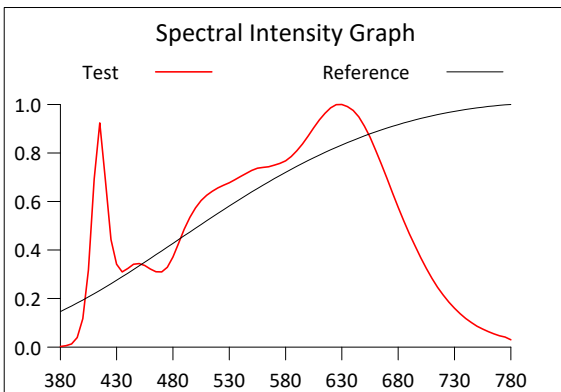
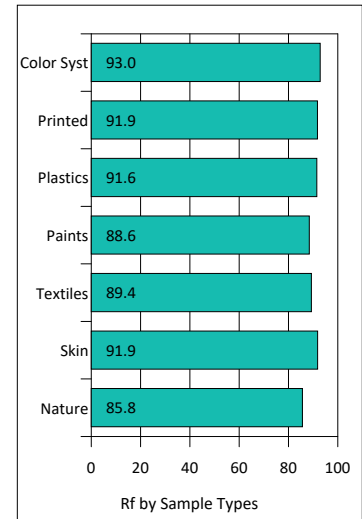
IES TM-30-2015 Test Report

Product Mark

Product Type : F52-35s-x1288U2-17 15.2W Manufacturer :
 Temperature : 'C Humidity : %
 Operator : Test Date : 2019-10-19
 Remark: Bin: R35 Lotto: 400

Rf: 90.5 CCT(K): 3523 u': 0.2347
 Rg: 102.1 LER: 262.0 Duv: 0.0010 v': 0.3414

Hue Bin	Rf	Graphic Shifts (%)	
		Chroma	Hue
1	92.6	-0.9%	-1.0%
2	95.1	-0.5%	0.8%
3	94.7	0.3%	2.4%
4	90.2	3.8%	4.1%
5	87.7	8.0%	3.5%
6	90.8	5.3%	1.1%
7	86.5	6.5%	-4.7%
8	89.4	3.6%	-5.3%
9	87.2	0.3%	-7.9%
10	85.8	-3.1%	-8.4%
11	89.3	-4.1%	-5.0%
12	93.9	-2.0%	-1.4%
13	96.6	1.4%	-0.1%
14	92.2	-2.9%	1.4%
15	91.9	-0.1%	-0.5%
16	90.2	-1.4%	1.5%



IES TM-30-2015 Test Report

Product Mark

Product Type : F52-35s-x1288U2-17 15.2W Manufacturer :
 Temperature : 'C Humidity : %
 Operator : Test Date : 2019-10-19
 Remark: Bin: R35 Lotto: 400

