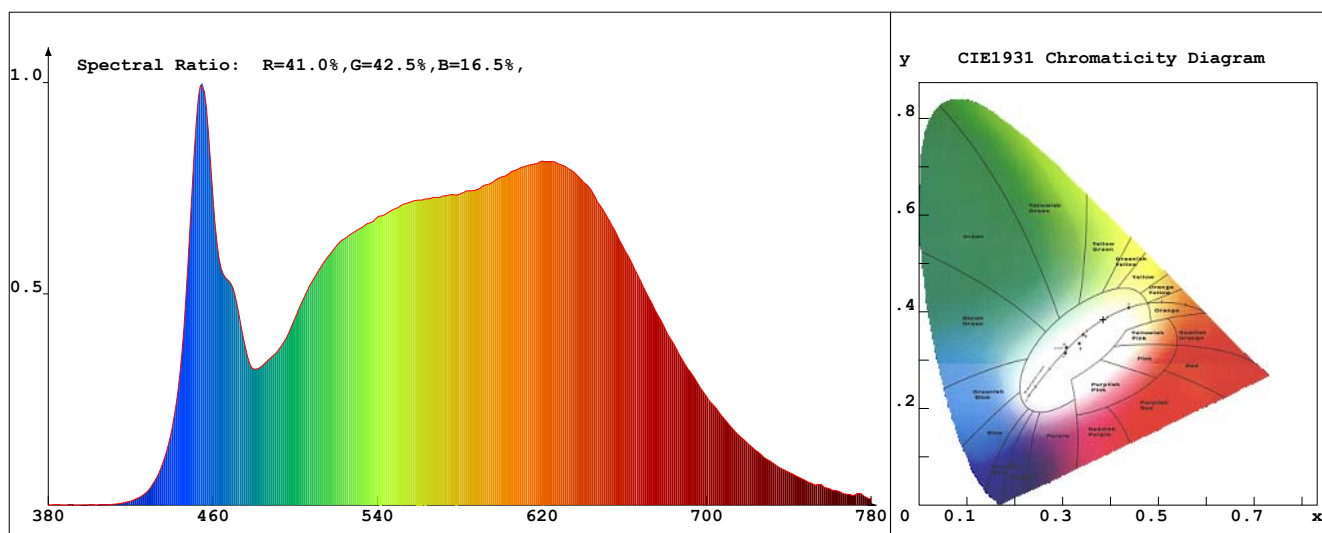


LED Test Report

Product Mark

Product Type : F52-400-480012/6-W4 5.4W Manufacturer :
 Temperature : 'C Humidity : %
 Operator : Test Date : 2019-10-19
 Remark :



Chroma Parameters

Chro.Coor.: x=0.3843 y=0.3836 u=0.2249 v=0.3368 duv=0.0020
 CCT: 3948K Dominant Wave.: 578.2nm Purity: 30.5% Centre Wave: 457.9nm
 Flux RGB Ratio: R=19.2%, G=78.0%, B=2.8% Peak Wave: 453.8nm Half Width: 23.7nm

Rendering Index: Ra= 93.4 CRI= 90.4

R1 =94	R2 =96	R3 =96	R4 =93	R5 =92	R6 =93	R7 =95	R8 =88
R9 =71	R10=89	R11=93	R12=67	R13=95	R14=97	R15=92	
PPF: 8.546umol/s (400-700nm)			PRF: 1.8mW (400-700nm)			PAR: 1.5mW (400-700nm)	

Photo Parameters

Flux: 566.55lm Effi.: 104.9lm/W Radiant: 1876.5mW Iv: 0.0mcd
 Scotopic Flux: 1003.6Plm Effi.: 0.0Plm/W S/P: 1.8
 Efficiency: 0.00 Effi Level: A++ (EU 874-2012) Photon Flux: 9047.360umol/s (380-780nm)

Ele. Parameters

Forward Current: If=225.0mA Reverse Voltage: Vr=5.00V
 Forward Voltage: Vf=24.00V Reverse Current: Ir=0.00uA
 Power: P=5.421W

Instrument state

Instrument: - Integral Time: 243.761ms VPeak: 14024
 VDark: 1165 Scan Range: 380-780nm Product ID: 201508924

IES TM-30-2015 Test Report

Product Mark

Product Type : F52-400-480012/6-W4 5.4W Manufacturer :

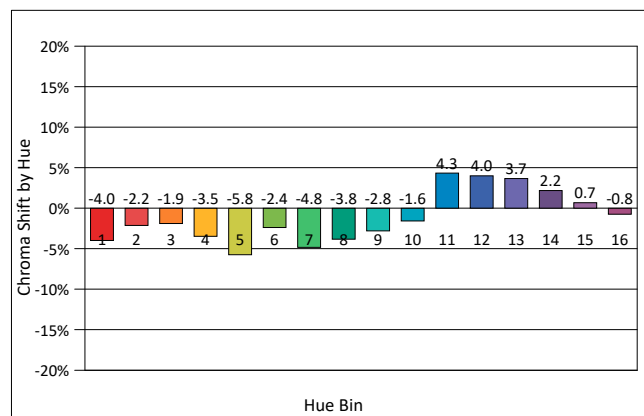
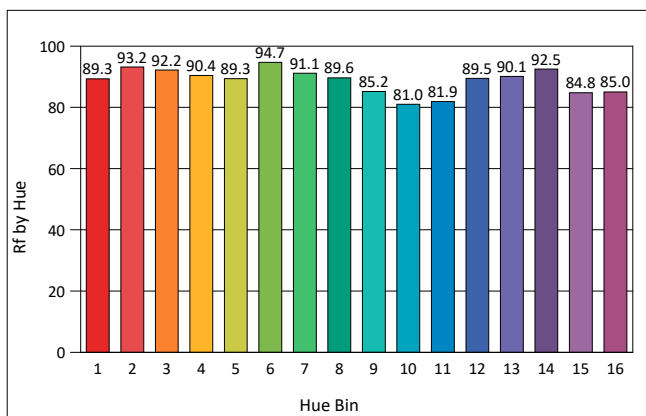
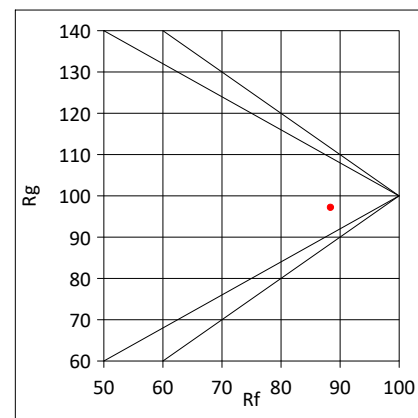
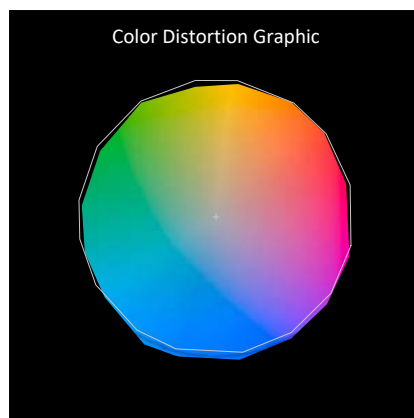
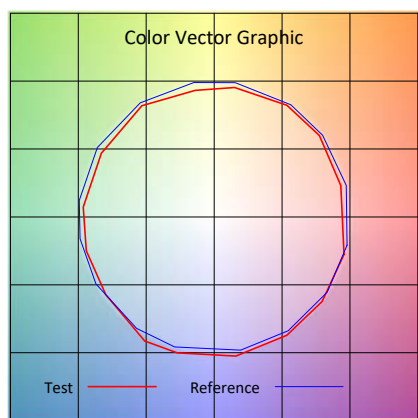
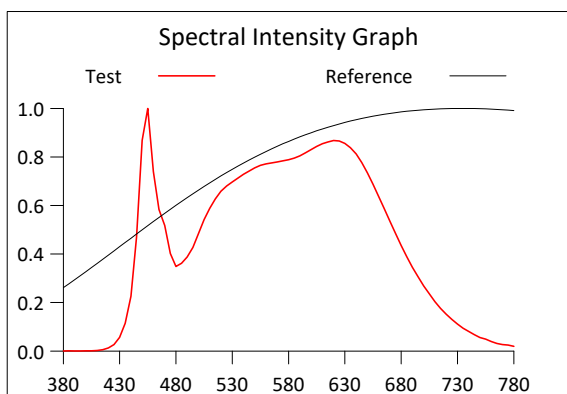
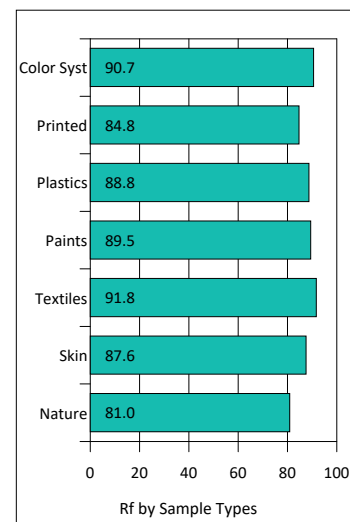
Temperature : 'C Humidity : %

Operator : Test Date : 2019-10-19

Remark :

Rf: 88.4 CCT(K): 3948 u': 0.2249
 Rg: 97.2 LER: 295.9 Duv: 0.0020 v': 0.3368

Hue Bin	Rf	Graphic Shifts (%)	
		Chroma	Hue
1	89.3	-4.0%	0.6%
2	93.2	-2.2%	1.1%
3	92.2	-1.9%	2.2%
4	90.4	-3.5%	-0.1%
5	89.3	-5.8%	0.2%
6	94.7	-2.4%	0.3%
7	91.1	-4.8%	1.9%
8	89.6	-3.8%	4.2%
9	85.2	-2.8%	9.5%
10	81.0	-1.6%	10.7%
11	81.9	4.3%	10.2%
12	89.5	4.0%	2.7%
13	90.1	3.7%	-4.2%
14	92.5	2.2%	-2.7%
15	84.8	0.7%	-7.7%
16	85.0	-0.8%	-7.2%



IES TM-30-2015 Test Report

Product Mark

Product Type : F52-400-480012/6-W4 5.4W Manufacturer :
 Temperature : 'C Humidity : %
 Operator : Test Date : 2019-10-19
 Remark :

